



Bringing People & Technology Together, Worldwide™

**Molex Premise Networks  
Corporate Headquarters**  
Harvard, MA 01451  
Tel: 800 866 3826  
Fax: 978 772 2011

**Western Europe Headquarters**  
Hampshire, England  
Tel: 44 (0) 1489 572111  
Fax: 44 (0) 1489 559106

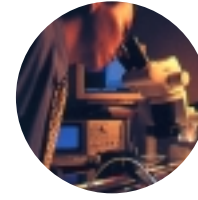
**Eastern Europe Headquarters**  
Warsaw, Poland  
Tel: 48 22 36 92 51  
Fax: 48 22 36 92 55

**Asia Headquarters**  
New Territories, Hong Kong  
Tel: 852 2637 3759  
Fax: 852 2647 1082

**South Pacific Headquarters**  
Victoria, Australia  
Tel: 61 3 9747 8322  
Fax: 61 3 9747 8627

Visit our Web site at [www.molexpn.com](http://www.molexpn.com)

PERFORMANCE



PACKAGED SOLUTIONS



PARTNERSHIPS



GLOBAL CAPABILITIES



# It's All About **Data Integrity**

At Molex Premise Networks, everything we do centers around what's most important to you—protecting the integrity of your data. It's this single-minded focus that allows us to provide some of the most innovative network cabling solutions. It's what sets us apart, and it's why more people around the globe are relying on Molex Premise Networks for their state-of-the-art communications infrastructure.

## A History of **Innovation**

Over 20 years ago, a progressive company named Mod-Tap designed innovative products to meet the needs of the developing network communication infrastructure industry. We helped create an entire industry by introducing some of the first enterprise cabling products, such as patch panels and configurable wall plates.



*Molex Premise Networks created an entire industry by offering systems that introduced some of the first enterprise cabling products, such as patch panels and configurable wallplates.*

Today, we've built on that history of innovation to become a worldwide leader

in network cabling solutions. As part of our continuing commitment to new, customer-driven products, Molex reinvests millions of dollars each year in expanded facilities, state-of-the-art equipment, new tooling and design processes. In fact, over the past five years that spending has topped \$1.1 billion. And after more than 60 years of being in business, that kind of reinvestment has resulted in thousands of new products that have met the specific needs of customers around the globe.



*The USO II is configured with our patented DataGate™, an automatic shutter that ensures flawless electrical performance.*



*Molex's extensive global resources include 68 sales offices, 26 product development centers and 50 manufacturing facilities on 6 continents.*



*Molex cable network products are tested end-to-end to ensure the highest level of integrity and rigid adherence to established industry standards.*



## Global Design, **Manufacturing and Quality**

Molex is a \$1.6 billion enterprise with 68 sales offices, 26 product development centers and 50 manufacturing facilities on six continents all linked through the Molex Global Information System. More than 95 percent of these manufacturing facilities have received ISO quality certification with over 75 percent QS 9000 certified.

In addition, Molex Premise Networks has established strategic partnerships that enable us to successfully deliver our systems to certified installers and distributors in over 100 other countries worldwide. So when you choose Molex Premise Networks, you choose a partner who can design, install and service your networks virtually anywhere in the world.

# A Cabling Strategy With One Goal in Mind— **Data Integrity**

In today's era of gigabit speeds, you must have quality cabling and interconnections installed, or you just can't expect error-free transmission. That's why Molex Premise Networks provides total network cabling solutions with one goal in mind: ensuring the integrity of your data.

From integrated copper cabling and fiber optics, to office outlets, patch panels, racks and more—we ensure outstanding electrical performance, durability and compliance with all applicable industry standards.

## From Beginning to End Our Integrated Approach Delivers



*Each year, Molex reinvests millions of dollars in expanded facilities, the latest equipment, new tooling and innovative processes.*

*RICI\* (Rapid Inter-Connect Interface) enables you to easily disconnect existing wall plates from the central wiring, eliminating the need to pull and punch down new cables during moves.*



### **High Performance.**

Molex Premise Networks designs products that meet or exceed both your expectations and all industry performance standards. The copper and fiber structured cabling system products we offer are engineered with outstanding electrical performance and durability to ensure flawless data integrity for our customers.

### **Packaged Solutions.**

We design our components and systems as "innovative packaged solutions" to support your overriding need for data integrity. From outlets to distribution frames, from copper to fiber components, from jacks to wire management systems, from documentation to customer support, our

solutions incorporate unique features that deliver outstanding flexibility, ease-of-use and low life-cycle costs.

### **Proven Partnerships.**

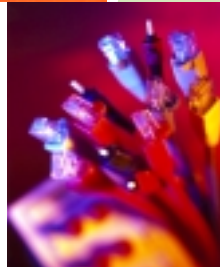
As a part of the second largest interconnection product manufacturer in the world, Molex Premise Networks leverages its internal partnerships to deliver innovative voice and data communications solutions. We've also established alliances with the highest quality cabling and installation partners to ensure absolute data integrity for our customers and extend the useful life of their systems.

\*RICI is a registered trademark of Barnes Wentworth.

## Designed by Experts Installed by Certified Professionals



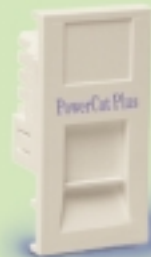
*We train installers and distribution partners around the globe to keep them up to speed on our business processes, and the latest standards and technologies.*



Even the best cabling system, designed by the best engineers, can fail if improperly installed. That's why we make certain that every Molex Premise Networks network cabling solution is installed by a certified professional. We've trained thousands of communications experts who regularly install Molex Premise Networks systems in the field. These professionals must complete comprehensive training and pass rigorous tests to become a certified Molex Premise

Networks installation partner. But we don't stop with certification. Our certified installers are required to continually keep up-to-date on the latest Molex Premise Networks products and systems by undergoing compliance training on an annual basis.

*The PowerCat Plus Euromod Module is designed to comply with emerging Category 6 standards for superior transmission performance and speed.*



## We Make Certain Your Cable Meets the Specs



*Molex Premise Networks has made the installation of fiber optic systems quick, easy and cost-effective with products like our new ModLink system.*

To ensure our cable solution exceeds industry specs, we've established long-term, strategic relationships with key manufacturers of wire and fiber optic cable. To do business with us, these suppliers must exceed the strict standards established by the telecommunications industry. And, we routinely put their products through rigorous testing to make sure—so you can be sure.

Cable partnerships are one more way we make certain that all components used in Molex Premise Networks network cabling systems will live up to your demand for flawless quality, highest performance and absolute data integrity.



## Data Integrity

### Today and Tomorrow—Guaranteed

We believe that our network cabling solutions are the best the industry has to offer. And we back this belief with one of the best warranties in the business—a global end-to-end warranty program.

We ensure your Molex Premise Networks cabling system will continue to exceed your system requirements, regardless of how they change over time—no matter where in the world it's installed.

### Be Sure of Your Success with Molex Premise Networks

We guarantee data integrity. We do that by offering a high-performance, packaged solution—designed by experts, and installed and maintained by certified partners. And we back these solutions with an unbeatable warranty.

To find out more about how Molex Premise Networks can develop a winning solution for your network, contact a Molex Premise Networks distributor today, or call us at **888-266-3827**. Or visit our Web site at [www.molexpn.com](http://www.molexpn.com).



*Molex's 12 development centers located around the globe support an ongoing flow of new products.*

