



SYSTIMAX®
GigaSPEED® XL
Solution Guide

Contents

Introduction	3
SYSTIMAX® GigaSPEED® XL 71 Series Cable	6
SYSTIMAX® GigaSPEED® XL Patch Cords	10
SYSTIMAX® GigaSPEED® XL Information Outlet	12
SYSTIMAX 360™ GigaSPEED® XL 1100GS3 Panel	13
SYSTIMAX 360™ Modular Panel	14
SYSTIMAX 360™ GigaSPEED® XL PATCHMAX® GS3	15
Commscope® M4800/M4800A 1U High Density Modular Panel	16
Commscope® M2000 Modular Panel	17
Commscope® M2100 Modular Panel	18

The SYSTIMAX® GigaSPEED® XL Solution

SYSTIMAX GigaSPEED XL Solutions offers everything you'd expect from the world's leading copper cabling system – performance far beyond Category 6 standards, cost-effective design innovations and reliability so robust it can help make network downtime a thing of the past.

With SYSTIMAX 360™, the next-generation infrastructure network, GigaSPEED XL Solution is truly a network without limits. Engineered with customers in mind, SYSTIMAX 360 products deliver the design, speed and intelligence you need to take your business further.

But one thing hasn't changed – the fundamental design principles that assure compatibility among all SYSTIMAX branded components including SYSTIMAX InstaPATCH® Cu, our pre-terminated copper solution. That means the GigaSPEED XL Solution you install today will support your legacy applications to help keep you functioning at peak performance, even as you migrate to tomorrow's technologies that require Category 6 compatibility.

The Commscope Labs Effect

Most vendors offer mixed cabling systems, built from the bottom up. That is, they begin with a core component (cable, usually) and add components from other vendors to create a "standards-compliant" system. Even if each component is Category 6 compliant, the channel may not be because of design differences among components.

Commscope has taken the opposite, "top-down," true systems approach. We begin by setting specific performance objectives. Proprietary system-level design techniques allow us to visualize the optimum end result by setting the highest system performance requirements and bandwidth. Sophisticated modeling tools and exhaustive design research yield the optimal system-level and component-level parameters. Finally these specifications of quality and reliability are incorporated into the production of every component.

Meet the industry-leading Category 6 U/UTP connectivity solution in the world today

Proprietary design and manufacturing techniques developed by Commscope Labs make GigaSPEED XL cabling one of the most reliable high-performance U/UTP media in the world. It can easily handle Gigabit Ethernet, 1.2 gigabit ATM, even 270 Mb/s Serial Digital Video and is backward compatible to keep your legacy applications running at peak efficiency.

Why Performance Matters

Yesterday, network performance simply meant fast file transfer. Today, it's life or death for a network.

Category 6 standards set the minimum performance requirements for a Category 6 installation to work. There is zero margin for error. Vendors that claim "Cat 6 compliance" often base that claim on the fact that individual components were able to achieve this performance, on average, in lab tests, at a specific frequency.

Do you like to gamble? "Average" performance in lab tests does not take into account real-world conditions such as network congestion, less-than-perfect installation, and imbalance among components. In the real world, many systems simply will not have enough headroom to cope. GigaSPEED XL Solutions provide the headroom you need for the real world with performance margins up to 300% better than Category 6 standards.

Ask the Tough Questions

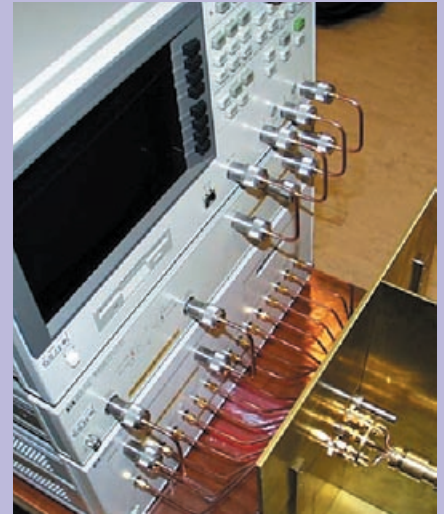
In the trade magazines you'll see impressive claims from many companies. Read the ads, then evaluate them by asking a few difficult questions:

- Can the company guarantee significant channel margin over the entire frequency range, from 1 to 250 MHz? We can.
- Are performance claims valid for the entire network channel, end to end, from equipment closet to desktop? Ours are. Guaranteed.
- Does the company design, manufacture and test every component? Every channel? We do.
- The Big Question: Are advertised performance claims guaranteed in the warranty, for existing and future applications, for 20 years? Ours are.

In today's economy, these are the questions that could determine your company's future. Be skeptical of long answers. We believe that only one company can answer all of these questions in one word: Yes.

The Tools our Competitors Envy

Most vendors measure the performance of individual components. But in real-life use, these figures have little meaning. At the ultra-critical tolerances required to run Category 6 applications, even a slight imbalance among Category 6-compliant components can cause frequent slowdowns and network failures. To build the world's most reliable cabling system, the scientists and engineers of Commscope Labs developed the most advanced network analysis tools in the world today: Modal Decomposition Modeling, Connector Field Pattern Modeling and Cable Twist Accuracy Technology. These proprietary tools and techniques allow us to match the performance characteristics of every component with a level of precision no other company can approach. We believe that this is the only way to assure full Category 6 performance throughout your complete network – closet to desktop – under all conditions. Which is why no other company warrants guaranteed worst-case channel performance claims in writing, like we do.



PERFORMANCE OF THE GIGASPEED XL SOLUTIONS

4 Connector Channels:	GigaSPEED XL Worst Pair Margin (1-250 MHz)	
	Guaranteed	Typical
Insertion Loss	5.00%	6.50%
Pr-Pr NEXT	6.0 dB	9.4 dB
PSNEXT	7.5 dB	10.6 dB
Pr-Pr ELFEXT	6.0 dB	11.3 dB
PSELFEXT	8.0 dB	12.7 dB
Return Loss	4.0 dB	5.7 dB

GigaSPEED XL Solution performance with four connector channels.
 Figures valid at any frequency of certified channel comprising GigaSPEED XL cable & apparatus.

PERFORMANCE OF THE GIGASPEED XL SOLUTIONS

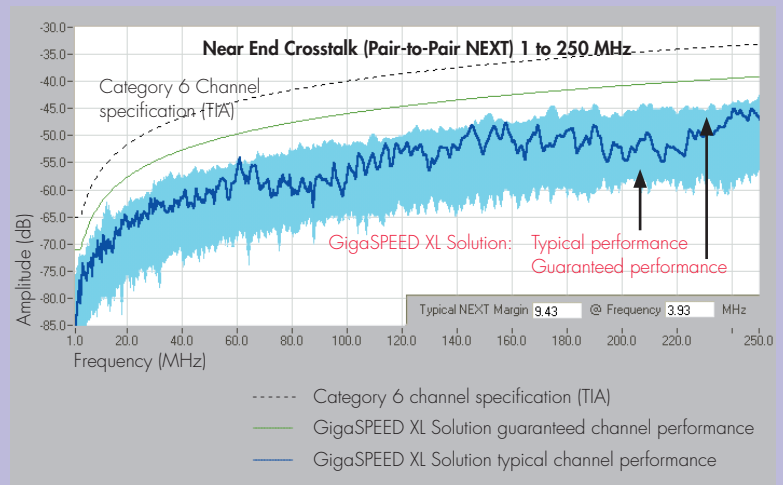
6 Connector Channels:	GigaSPEED XL Worst Pair Margin (1-250 MHz)	
	Guaranteed	Typical
Insertion Loss	4.0%	5.5%
Pr-Pr NEXT	4.0 dB	7.4 dB
PSNEXT	5.5 dB	8.5 dB
Pr-Pr ELFEXT	4.0 dB	8.9 dB
PSELFEXT	6.0 dB	10.4 dB
Return Loss	2.0 dB	5.2 dB

GigaSPEED XL Solution performance with six connector channels.
 Figures valid at any frequency of certified channel comprising GigaSPEED XL cable & apparatus.

This chart shows just one of many reasons why our GigaSPEED XL Solution leads the industry, worldwide. Our proprietary system-level design techniques assure guaranteed channel margin across the entire frequency range.

Our GigaSPEED XL Solution exceeds the Category 6 standard by 6 dB and is so advanced that it can support 6 connection points – with generous margin to spare over Category 6 specifications; (see table on page 5).

Please note that these are guaranteed, end-to-end channel performance figures. We welcome comparisons to competitive solutions in the market place.



Highlights from the Best Warranty in the Industry

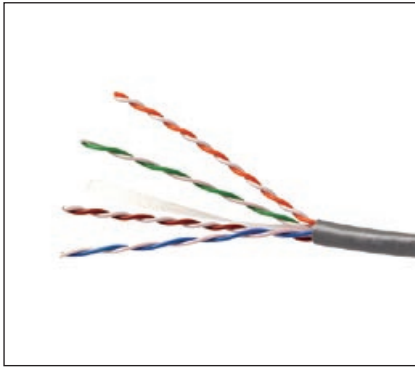
- All GigaSPEED XL Solutions are backed by a 20-year Extended Product Warranty that we believe to be the best in the industry.
- Our Application Assurance covers everything from voice, data and video applications to standards-based complex building management systems by some of the world's leading manufacturers.
- We will specify the performance of each application – not “average,” not “nominal,” as many companies do, but guaranteed worst-case channel performance – and we will warrant that your certified SYSTIMAX GigaSPEED XL Solution will meet or exceed those specifications for 20 years.
- GigaSPEED XL Solutions are so advanced that we can even guarantee the performance of applications that do not yet exist. Specifically, we will warrant any applications introduced by recognized industry standards-setting bodies or user forums that specify ANSI/TIA-568-C.2 or ISO/IEC 11801 components and link/channel specifications for the pertinent cabling system.

We Build Solutions. Ask us.

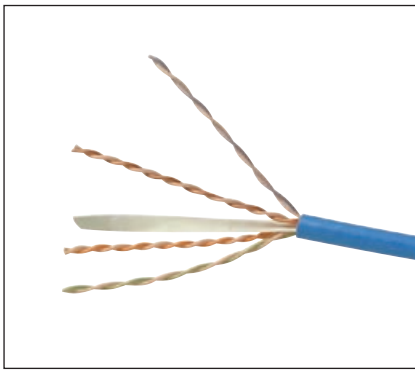
We have far more to explain about how our systems can help solve your immediate and future challenges. Our research has yielded many innovative solutions that cannot be detailed in this small brochure.

To learn more, please visit our Web site at www.commscope.com or contact your Commscope representative. We'll be glad to explain how we've surpassed the expectations of companies large and small, around the world. And how quickly, easily and inexpensively we can do the same for you.

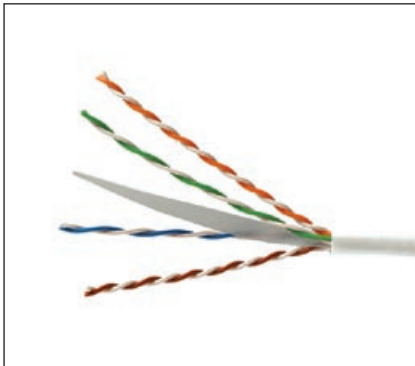
SYSTIMAX® GigaSPEED® XL 71 Series Cable



SYSTIMAX GigaSPEED® XL 1071E Series Cable



SYSTIMAX GigaSPEED® XL 2071E Series Cable



SYSTIMAX GigaSPEED® XL 3071E Series Cable

Non-plenum

The Non-plenum 1071E 4-Pair GigaSPEED XL Cable meets or exceeds Category 6/Class E attenuation and NEXT requirements in ISO/IEC 11801, CENELEC EN50173 and ANSI/TIA-568-C.2. Further, these cables are ETL listed as Category 6. The 71E GigaSPEED XL cables feature a patent-pending thin and easy-to-remove bisector tape that delivers the performance benefits of more traditional fluted center members without the associated stiffness and size.

Plenum

The Plenum 2071E 4-pair GigaSPEED XL Cable meets or exceeds Category 6/Class E attenuation and NEXT requirements in ISO/IEC 11801, CENELEC EN50173 and ANSI/TIA-568-C.2. Further, these cables are ETL listed as Category 6. The 71E GigaSPEED XL cables feature a patent-pending thin and easy-to-remove bisector tape that delivers the performance benefits of more traditional fluted center members without the associated stiffness and size. The 2071E 4-pair cable is composed of bare solid copper conductors insulated with Fluorinated-Ethylene-Propylene (FEP). The core of twisted pairs is jacketed with a low smoke PVC. It conforms to the low flame, low smoke requirements of the NEC.

LSZH

The LSZH 3071E 4-pair GigaSPEED XL Cable meets or exceeds Category 6/Class E attenuation and NEXT requirements in ISO/IEC 11801, CENELEC EN50173 and ANSI/TIA-568-C.2. Further, these cables are ETL listed as Category 6. The 71E GigaSPEED XL cables feature a patent-pending thin and easy-to-remove bisector tape that delivers the performance benefits of more traditional fluted center members without the associated stiffness and size. 3071E cable is composed of solid copper conductors insulated with non-halogen high-density polyethylene and jacketed with a low smoke zero halogen compound.

SPECIFICATIONS

	1071E	2071E	3071E
Nominal Outer Jacket OD	0.232 in (5.89 mm)	0.224 in (5.69 mm)	0.231 in (5.87 mm)
Nominal Outer Jacket Thickness	0.022 in (0.56 mm)	0.020 in (0.51 mm)	0.020 in (0.51 mm)
Maximum Pulling Tension	25 lbs (11.3 kg)	25 lbs (11.3 kg)	25 lbs (11.3 kg)
Nominal Cable Weight	25.6 lbs/kft (38.2 kg/km)	29.1 lbs/1,000 ft (13.2 kg/304.8 m)	25.0 lbs/kft (39.3 kg/km)
Operating Temperature	-4°F to 140°F (-20°C to 60°C)	-4°F to 140°F (-20°C to 60°C)	-4°F to 140°F (-20°C to 60°C)
Installation Temperature	32°F to 140°F (0°C to 60°C)	32°F to 140°F (0°C to 60°C)	32°F to 140°F (0°C to 60°C)
Conductor Diameter	23 AWG	23 AWG	23 AWG
Jacket Material	PVC	Low Smoke PVC	Low Smoke Zero Halogen
ETL Type	CMR	CMP	
IEC Verified			IEC 60332-3
Nominal Velocity of Propagation	69%	71%	69%
Maximum DC Resistance	7.61 Ohms/100 m	7.61 Ohms/100 m	7.61 Ohms/100 m
Maximum DC Resistance Unbalanced	3%	3%	3%
Maximum Mutual Capacitance at 1 KHz	5.6 nF/100 m	5.6 nF/100 m	5.6 nF/100 m
Minimum Dielectric Strength	1500 VAC or 2500 VDC	1500 VAC or 2500 VDC	1500 VAC or 2500 VDC
Voltage Safety Rating	300 Volts per NEC 800.179	300 Volts per NEC 800.179	300 Volts per NEC 800.179

ORDERING INFORMATION:

Material ID	Product Number	Description
Non-plenum 1071		
700212129	1071 004EBK 4/23 W1000	GigaSPEED XL 1071 E Category 6 U/UTP Cable, black jacket, 4 pair count, 1000 ft (305 m) length, We Tote Box
760004697	1071 004EBL 4/23 R1000	GigaSPEED XL 1071 E Category 6 U/UTP Cable, blue jacket, 4 pair count, 1000 ft (305 m) length, reel
760004689	1071 004EBL 4/23 W1000	GigaSPEED XL 1071 E Category 6 U/UTP Cable, blue jacket, 4 pair count, 1000 ft (305 m) length, We Tote Box
760080671	1071 004EBL 4/23 R3000	GigaSPEED XL 1071 E Category 6 U/UTP Cable, blue jacket, 4 pair count, 3000 ft (915 m) length, reel
760039610	1071 004EGR 4/23 W1000	GigaSPEED XL 1071 E Category 6 U/UTP Cable, green jacket, 4 pair count, 1000 ft (305 m) length, We Tote Box
760081307	1071 004EGR 4/23 R3000	GigaSPEED XL 1071 E Category 6 U/UTP Cable, green jacket, 4 pair count, 3000 ft (915 m) length, reel
700211956	1071 004ELB 4/23 R1000	GigaSPEED XL 1071 E Category 6 U/UTP Cable, light blue jacket, 4 pair count, 1000 ft (305 m) length, We Tote Box
760040105	1071 004ELB 4/23 R3000	GigaSPEED XL 1071 E Category 6 U/UTP Cable, light blue jacket, 4 pair count, 3000 ft (915 m) length, reel
700211964	1071 004ELB 4/23 W1000	GigaSPEED XL 1071 E Category 6 U/UTP Cable, light blue jacket, 4 pair count, 1000 ft (305 m) length, We Tote Box
700212087	1071 004ELL 4/23 R1000	GigaSPEED XL 1071 E Category 6 U/UTP Cable, lilac jacket, 4 pair count, 1000 ft (305 m) length, reel
700212095	1071 004ELL 4/23 W1000	GigaSPEED XL 1071 E Category 6 U/UTP Cable, lilac jacket, 4 pair count, 1000 ft (305 m) length, We Tote Box
700212111	1071 004EOR 4/23 R1000	GigaSPEED XL 1071 E Category 6 U/UTP Cable, orange jacket, 4 pair count, 1000 ft (305 m) length, reel
700212103	1071 004EOR 4/23 W1000	GigaSPEED XL 1071 E Category 6 U/UTP Cable, orange jacket, 4 pair count, 1000 ft (305 m) length, We Tote Box
760011858	1071 004EPK 4/23 W1000	GigaSPEED XL 1071 E Category 6 U/UTP Cable, pink jacket, 4 pair count, 1000 ft (305 m) length, We Tote Box
760093286	1071 004EPR 4/23 R1000	GigaSPEED XL 1071 E Category 6 U/UTP Cable, purple jacket, 4 pair count, 1000 ft (305 m) length, reel
760039644	1071 004EPR 4/23 W1000	GigaSPEED XL 1071 E Category 6 U/UTP Cable, purple jacket, 4 pair count, 1000 ft (305 m) length, We Tote Box
700212012	1071 004ERD 4/23 R1000	GigaSPEED XL 1071 E Category 6 U/UTP Cable, red jacket, 4 pair count, 1000 ft (305 m) length, reel
700212020	1071 004ERD 4/23 W1000	GigaSPEED XL 1071 E Category 6 U/UTP Cable, red jacket, 4 pair count, 1000 ft (305 m) length, We Tote Box
700211923	1071 004ESL 4/23 R1000	GigaSPEED XL 1071 E Category 6 U/UTP Cable, slate jacket, 4 pair count, 1000 ft (305 m) length, reel
760040097	1071 004ESL 4/23 R3000	GigaSPEED XL 1071 E Category 6 U/UTP Cable, slate jacket, 4 pair count, 3000 ft (915 m) length, reel
700211931	1071 004ESL 4/23 W1000	GigaSPEED XL 1071 E Category 6 U/UTP Cable, slate jacket, 4 pair count, 1000 ft (305 m) length, We Tote Box
700212053	1071 004EGN 4/23 R1000	GigaSPEED XL 1071 E Category 6 U/UTP Cable, spring green jacket, 4 pair count, 1000 ft (305 m) length, reel
700212061	1071 004EGN 4/23 W1000	GigaSPEED XL 1071 E Category 6 U/UTP Cable, spring green jacket, 4 pair count, 1000 ft (305 m) length, We Tote Box
700214208	1071 004EWH 4/23 R1000	GigaSPEED XL 1071 E Category 6 U/UTP Cable, white jacket, 4 pair count, 1000 ft (305 m) length, reel
760040089	1071 004EWH 4/23 R3000	GigaSPEED XL 1071 E Category 6 U/UTP Cable, white jacket, 4 pair count, 3000 ft (915 m) length, reel
700212046	1071 004EWH 4/23 W1000	GigaSPEED XL 1071 E Category 6 U/UTP Cable, white jacket, 4 pair count, 1000 ft (305 m) length, We Tote Box
700211980	1071 004EYL 4/23 R1000	GigaSPEED XL 1071 E Category 6 U/UTP Cable, yellow jacket, 4 pair count, 1000 ft (305 m) length, reel
700211998	1071 004EYL 4/23 W1000	GigaSPEED XL 1071 E Category 6 U/UTP Cable, yellow jacket, 4 pair count, 1000 ft (305 m) length, We Tote Box

ORDERING INFORMATION:

Material ID	Product Number	Description
Plenum 2071		
700210230	2071 004EBK 4/23 W1000	GigaSPEED XL 2071E Category 6 U/UTP Cable, black jacket, 4 pair count, 1000 ft (305 m), We Tote Box
700210222	2071 004EBK 4/23 R1000	GigaSPEED XL 2071E Category 6 U/UTP Cable, black jacket, 4 pair count, 1000 ft (305 m), reel
700210081	2071 004EBL 4/23 R1000	GigaSPEED XL 2071E Category 6 U/UTP Cable, blue jacket, 4 pair count, 1000 ft (305 m), reel
700210099	2071 004EBL 4/23 R3000	GigaSPEED XL 2071E Category 6 U/UTP Cable, blue jacket, 4 pair count, 3000 ft (915 m), reel
700208093	2071 004EBL 4/23 W1000	GigaSPEED XL 2071E Category 6 U/UTP Cable, blue jacket, 4 pair count, 1000 ft (305 m), We Tote Box
700210206	2071 004ELL 4/23 R1000	GigaSPEED XL 2071E Category 6 U/UTP Cable, lilac jacket, 4 pair count, 1000 ft (305 m), reel
760021212	2071 004ELL 4/23 R3000	GigaSPEED XL 2071E Category 6 U/UTP Cable, lilac jacket, 4 pair count, 3000 ft (915 m), reel
700210214	2071 004ELL 4/23 W1000	GigaSPEED XL 2071E Category 6 U/UTP Cable, lilac jacket, 4 pair count, 1000 ft (305 m), We Tote Box
700210008	2071 004EOR 4/23 R1000	GigaSPEED XL 2071E Category 6 U/UTP Cable, orange jacket, 4 pair count, 1000 ft (305 m), reel
760070367	2071 004EOR 4/23 R3000	GigaSPEED XL 2071E Category 6 U/UTP Cable, orange jacket, 4 pair count, 3000 ft (915 m), reel
700210024	2071 004EOR 4/23 W1000	GigaSPEED XL 2071E Category 6 U/UTP Cable, orange jacket, 4 pair count, 1000 ft (305 m), We Tote Box
760038554	2071 004EPK 4/23 R1000	GigaSPEED XL 2071E Category 6 U/UTP Cable, pink jacket, 4 pair count, 1000 ft (305 m), reel
760011841	2071 004EPK 4/23 W1000	GigaSPEED XL 2071E Category 6 U/UTP Cable, pink jacket, 4 pair count, 1000 ft (305 m), We Tote Box
760055830	2071 004EPR 4/23 R1000	GigaSPEED XL 2071E Category 6 U/UTP Cable, purple jacket, 4 pair count, 1000 ft (305 m), reel
700210131	2071 004EYL 4/23 R1000	GigaSPEED XL 2071E Category 6 U/UTP Cable, yellow jacket, 4 pair count, 1000 ft (305 m), reel
700210248	2071 004ERD 4/23 R1000	GigaSPEED XL 2071E Category 6 U/UTP Cable, red jacket, 4 pair count, 1000 ft (305 m), reel
760043158	2071 004ERD 4/23 R3000	GigaSPEED XL 2071E Category 6 U/UTP Cable, red jacket, 4 pair count, 3000 ft (915 m), reel
700210263	2071 004ERD 4/23 W1000	GigaSPEED XL 2071E Category 6 U/UTP Cable, red jacket, 4 pair count, 1000 ft (305 m), We Tote Box
700210198	2071 004ESL 4/23 R1000	GigaSPEED XL 2071E Category 6 U/UTP Cable, slate jacket, 4 pair count, 1000 ft (305 m), reel
760005652	2071 004ESL 4/23 R3000	GigaSPEED XL 2071E Category 6 U/UTP Cable, slate jacket, 4 pair count, 3000 ft (915 m), reel
700214372	2071 004ESL 4/23 W1000	GigaSPEED XL 2071E Category 6 U/UTP Cable, slate jacket, 4 pair count, 1000 ft (305 m), We Tote Box
700210156	2071 004EGN 4/23 R1000	GigaSPEED XL 2071E Category 6 U/UTP Cable, spring green jacket, 4 pair count, 1000 ft (305 m), reel
760021204	2071 004EGN 4/24 R3000	GigaSPEED XL 2071E Category 6 U/UTP Cable, spring green, 4 pair count, 3000 ft (915 m), reel
700210164	2071 004EGN 4/23 W1000	GigaSPEED XL 2071E Category 6 U/UTP Cable, spring green, 4 pair count, 1000 ft (305 m), We Tote Box
700210032	2071 004EWH 4/23 R1000	GigaSPEED XL 2071E Category 6 U/UTP Cable, white jacket, 4 pair count, 1000 ft (305 m), reel
700210057	2071 004EWH 4/23 R3000	GigaSPEED XL 2071E Category 6 U/UTP Cable, white jacket, 4 pair count, 3000 ft (915 m), reel
700208101	2071 004EWH 4/23 W1000	GigaSPEED XL 2071E Category 6 U/UTP Cable, white jacket, 4 pair count, 1000 ft (305 m), We Tote Box

ORDERING INFORMATION:

Material ID	Product Number	Description
LSZH 3071		
700216369	3071 004EBK 4/23 R1000	GigaSPEED XL 3071E Category 6 U/UTP Cable, black jacket, 4 pair count, 1000 ft (305 m), reel
700216484	3071 004EBL 4/23 R1000	GigaSPEED XL 3071E Category 6 U/UTP Cable, blue jacket, 4 pair count, 1000 ft (305 m), reel
760081265	3071 004EBL 4/23 R3000	GigaSPEED XL 3071E Category 6 U/UTP Cable, blue jacket, 4 pair count, 3000 ft (915 m), reel
700216492	3071 004EBL 4/23 W1000	GigaSPEED XL 3071E Category 6 U/UTP Cable, blue jacket, 4 pair count, 1000 ft (305 m), We Tote Box
700216419	3071 004ESL 4/23 R1000	GigaSPEED XL 3071E Category 6 U/UTP Cable, slate jacket, 4 pair count, 1000 ft (305 m), reel
760095554	3071 004ESL 4/23 W1000	GigaSPEED XL 3071E Category 6 U/UTP Cable, slate jacket, 4 pair count, 1000 ft (305 m), We Tote Box
700216443	3071 004EWH 4/23 R1000	GigaSPEED XL 3071E Category 6 U/UTP Cable, white jacket, 4 pair count, 1000 ft (305 m), reel
760081281	3071 004EWH 4/23 R3000	GigaSPEED XL 3071E Category 6 U/UTP Cable, white jacket, 4 pair count, 3000 ft (915 m), reel
700216450	3071 004EWH 4/23 W1000	GigaSPEED XL 3071E Category 6 U/UTP Cable, white jacket, 4 pair count, 1000 ft (305 m), We Tote Box
760081273	3071 004ERD 4/23 R3000	GigaSPEED XL 3071E Category 6 U/UTP Cable, red jacket, 4 pair count, 3000 ft (915 m), reel

SYSTIMAX® GigaSPEED® XL Patch Cords



SYSTIMAX GigaSPEED® XL GS8E

The GS8E Modular Patch Cord family of high bandwidth cords form parts of the GigaSPEED XL cabling solution. Electrical performance exceeds TIA and ISO/IEC Category 6/Class E specifications and is fully backward compatible with Category 5e and 5 connectors.

The GS8E Modular Patch Cord comes in a wide variety of variation which includes plenum, Low Smoke Zero Halogen (LSZH), stranded conductors, solid conductors, straight through wiring, crossover wiring and rollover wiring to meet different application needs.

The GS8E-S solid conductor cords consist of solid conductor cable, factory terminated with GS8E plugs.

The GS8E-SP is a solid plenum version of GS8E patch cord which provides extra margin on fire safety.

The GS8E-L, Low Smoke Zero Halogen (LSZH), is a stranded GigaSPEED XL Solution cord and GS8E-SL is a LSZH solid cable assembly which is terminated with GS8E plugs.

Patented plug design, improved 24 gauge cordage and a unique manufacturing process assure excellent electrical performance and low variability. Improved anti-s snag feature provides maximum protection from snagging during moves and rearrangements.

GS8E GIGASPEED XL MODULAR PATCH CORD

Material ID	Product Number	Description (All solid conductor)	Type	Modular Jack Color	UOM	Jacket Color	Cable/Cordage Length Options
CPC3312	GS8E	GS8E Stranded Cordage Modular Patch Cord	U/UTP Modular Patch Cord	0	F,M	1,2,3,4,6,7,8,9,B,Z	1-100ft / 1-30m
BPC3312	GS8E-10PK	GS8E Stranded Cordage Modular Patch Cord, 10 pack	U/UTP Modular Patch Cord	0	F,M	1,2,3,4,6,7,8,9,B,Z	1-25ft / 1-8m
CPC3313	GS8E-X3	GS8E 10/100BASE-T 2X3 & 1X4 Crossover Stranded Cordage	U/UTP Modular Patch Cord	0	F,M	1,2,3,4,6,7,8,9,B,Z	1-100ft / 1-30m
CPC3315	GS8E-X5	GS8E 1000BASE-T MDI-X Crossover Stranded Cordage	U/UTP Modular Patch Cord	0	F,M	1,2,3,4,6,7,8,9,B,Z	1-100ft / 1-30m
CPC3316	GS8E-R	GS8E Stranded Cordage Rollover	U/UTP Modular Patch Cord	0	F,M	1,2,3,4,6,7,8,9,B,Z	1-100ft / 1-30m
CPC331T	GS8E-XT1	GS8E T1 1X2 & 3&4 Crossover Stranded Cordage	U/UTP Modular Patch Cord	0	F,M	1,2,3,4,6,7,8,9,B,Z	1-100ft / 1-30m
CPC3412	GS8E117	GS8E Single-ended Stranded Cordage	U/UTP Modular Patch Cord	0	F,M	1,2,3,4,6,7,8,9,B,Z	1-100ft / 1-30m
CPC9912	GS8E-K	GS8E Keyed Plug Stranded Cordage	U/UTP Modular Patch Cord	0	F,M	1,2,3,4,6,7,8,9,B,Z	1-100ft / 1-30m
CPCNN12	GS8E-SM#	SecureMAX GS8E Tamper-resistant Patch Cord (Double side lock)	U/UTP Modular Patch Cord	0	F,M	1,2,3,4,6,7,8,9,B,Z	1-100ft / 1-30m
CPCN312	GS8E-SM-GS8E#	SecureMAX GS8E Tamper-resistant Patch Cord (Single side lock)	U/UTP Modular Patch Cord	0	F,M	1,2,3,4,6,7,8,9,B,Z	1-100ft / 1-30m
CPC3382	GS8E-S	GS8E Solid Cable	U/UTP Modular Patch Cord	0	F,M	1,2,3,4,6,7,8,9,B,C,Z	1-300ft / 1-100m
CPC3482	GS8E117-S	GS8E Single-ended Solid Cable	U/UTP Modular Patch Cord	0	F,M	1,2,3,4,6,7,8,9,B,C,Z	1-300ft / 1-100m
CPC3372	GS8E-SP	GS8E Solid Plenum Cable	U/UTP Modular Patch Cord	0	F,M	1,4,6,7,8,9,B,C,Z	1-300ft / 1-100m
CPC3472	GS8E117-SP	GS8E Single-ended Solid Plenum Cable	U/UTP Modular Patch Cord	0	F,M	1,4,6,7,8,9,B,C,Z	1-300ft / 1-100m
CPC3373	GS8E-SP-X3	GS8E Solid Plenum 10/100BASE-T 2X3 & 1X4 Crossover Cable	U/UTP Modular Patch Cord	0	F,M	1,4,6,7,8,9,B,C,Z	1-300ft / 1-100m
CPC3392	GS8E-L	GS8E Stranded LSZH Cordage	U/UTP Modular Patch Cord	0	F,M	2,4,6,7,8,9,B,Z	1-100ft / 1-30m
CPC3492	GS8E117-L	GS8E Single-ended Stranded LSZH Cordage	U/UTP Modular Patch Cord	0	F,M	2,4,6,7,8,9,B,Z	1-100ft / 1-30m
CPC3393	GS8E-LX3	GS8E LSZH 10/100BASE-T 2X3 & 1X4 Crossover	U/UTP Modular Patch Cord	0	F,M	2,4,6,7,8,9,B,Z	1-100ft / 1-30m
CPC3322	GS8E-SL	GS8E Solid LSZH Cable	U/UTP Modular Patch Cord	0	F,M	8	1-300ft / 1-100m
CPC33E1	GS8E-SLA	GS8E Solid LSZH Cordage A-wired	U/UTP Modular Patch Cord	0	F,M	8	1-300ft / 1-100m
CPC34E1	GS8E117-SLA	GS8E Single-ended Solid LSZH Cordage A-wired	U/UTP Modular Patch Cord	0	F,M	8	1-300ft / 1-100m

Ordering Material ID Example: CPC3312 - 01F001

GS8E GIGASPEED® XL ZONE EXTENSION CORD

Material ID	Product Number	Description (All solid conductor)	Type	Modular Jack Color	UOM	Jacket Color	Cable/Cordage Length Options
CPC3282	GS8E-MGS400-S	GS8E-MGS400 on 1071 Solid Cable	U/UTP Zone Extension Cord	1,2,3,4 5,6,7,8,9	F,M	1,2,3,4,6, 7,8,9,B,C,Z	1-300ft / 1-100m
CPC3272	GS8E-MGS400-SP	GS8E-MGS400 on 2071 Solid Plenum Cable	U/UTP Zone Extension Cord	1,2,3,4 5,6,7,8,9	F,M	1,4,6,7,8, 9,B,C,Z	1-300ft / 1-100m
CPC3222	GS8E-MGS400-SL	GS8E-MGS400 on 3071 Solid LSZH Cable	U/UTP Zone Extension Cord	1,2,3,4 5,6,7,8,9	F,M	8	1-300ft / 1-100m

Ordering Material ID Example: **CPC3372-08F007**

MGS400 PRE-TERMINATED TO 71 SERIES CABLES

Material ID	Product Number	Description (All solid conductor)	Type	Modular Jack Color	UOM	Jacket Color	Cable/Cordage Length Options
CPC2282	MGS400-MGS400-S	MGS400-MGS400 on 1071 Solid Cable	U/UTP Pre-terminated Cord	1,2,3,4 5,6,7,8,9	F,M	1,2,3,4,6, 7,8,9,B,C,Z	1-300ft / 1-100m
CPC2272	MGS400-MGS400-SP	MGS400-MGS400 on 2071 Solid Plenum Cable	U/UTP Pre-terminated Cord	1,2,3,4 5,6,7,8,9	F,M	1,4,6,7,8, 9,B,C,Z	1-300ft / 1-100m
CPC2222	MGS400-MGS400-SL	MGS400-MGS400 on 3071 Solid LSZH Cable	U/UTP Pre-terminated Cord	1,2,3,4 5,6,7,8,9	F,M	8	1-300ft / 1-100m

Ordering Material ID Example: **CPC2282-1CF050**

SecureMAX Patch Cords and Accessories are not available for sale in Europe, Russia, Australia and Japan. Please contact your local sales to check availability in your country .

Jack Color Options	Cord Color Options	Unit of Measure (UOM)
0 Not Applicable	1 Black (BK)	F Feet
1 Black (BK)	2 Light Blue (LB)	M Meters
2 Blue (BL)	3 Dark Gray (DG)	
3 Gray (GY)	4 Spring Green (GN)	
4 Green (GR)	6 Orange (OR)	
5 Ivory (IV)	7 Red (RD)	
6 Orange (OR)	8 White (WH)	
7 Red (RD)	9 Yellow (YL)	
8 White (WH)	B Lilac (LL)	
9 Yellow (YL)	C Slate (SL)	
	Z Blue (BL)	

SYSTIMAX® GigaSPEED® XL Information Outlet



SYSTIMAX GigaSPEED XL MGS400-318 and MGS400-262



SYSTIMAX GigaSPEED XL Kit:
Cap with Strain Relief for MGS Outlet

The MGS400 Information Outlet features proprietary crosstalk cancellation techniques for superior near End crosstalk (NEXT and PSNEXT) performance that provides unmatched throughput performance when installed as part of a complete GigaSPEED XL channel. The solution is guaranteed to exceed the Category 6/Class E channel specifications for ISO/IEC and TIA, even under the worst case channel configuration.

The MGS400 snaps into any Commscope modular faceplate, frame, or surface-mount box and can be mounted at either 90 degrees (straight) or 45 degrees (angled). Multicolored identification labels assure fast and accurate installation. A low profile wire cap protects against contamination and secures connections.

ORDERING INFORMATION:

Material ID	Product Number	Description
700206667	MGS400-003	GigaSPEED XL MGS400 Information Outlet, Black
700206683	MGS400-112	GigaSPEED XL MGS400 Information Outlet, Orange
700206691	MGS400-123	GigaSPEED XL MGS400 Information Outlet, Yellow
700206709	MGS400-226	GigaSPEED XL MGS400 Information Outlet, Green
700206725	MGS400-262	GigaSPEED XL MGS400 Information Outlet, White
700206741	MGS400-317	GigaSPEED XL MGS400 Information Outlet, Red
700206758	MGS400-318	GigaSPEED XL MGS400 Information Outlet, Blue
700206675	MGS400-361	GigaSPEED XL MGS400 Information Outlet, Violet
760070326	MGS400-215	GigaSPEED XL MGS400 Information Outlet, Misty Cream
700206717	MGS400-246	GigaSPEED XL MGS400 Information Outlet, Ivory
700206733	MGS400-270	GigaSPEED XL MGS400 Information Outlet, Gray
760006361	MGS400-317-K (Keyed)	GigaSPEED XL MGS400 Information Outlet, Red
760041996	MGS400 BULK-318	GigaSPEED XL MGS400 Information Outlet, bulk, Blue
760041962	MGS400 BULK-003	GigaSPEED XL MGS400 Information Outlet, bulk, Black
760041988	MGS400 BULK-262	GigaSPEED XL MGS400 Information Outlet, bulk, White
760041970	MGS400 BULK-246	GigaSPEED XL MGS400 Information Outlet, bulk, Ivory
760077156	MGS400BH-BULK-112	GigaSPEED XL MGS400 Information Outlet, bulk, Orange
760034215		GigaSPEED XL MGS400 Information Outlet, Handheld Terminating Device, Black
760056069		Kit: Cap with Strain Relief for MGS Outlet, Clear

SYSTIMAX 360™ GigaSPEED® XL 1100GS3 Panel



SYSTIMAX 360 GigaSPEED XL 1100GS3 24 Port Panel



SYSTIMAX 360 GigaSPEED XL 1100GS3 48 Port Panel

The GigaSPEED XL 1100GS3 Panels are available in 1U and 2U options and feature the elegant SYSTIMAX 360™ design. Enhanced rear cable management features make installation easier over current cable bundling/dressing methods by reducing time and steps to tie down bundles of cable on the rear of the panels.

Commscope's new panel platform, Evolve, is an intelligent/intelligent-ready modular panel system designed to accommodate unshielded multi-connector modules, individual shielded information outlets, pre-terminated copper trunks and future connector designs. For applications that demand intelligence today, the panel platform offers built-in intelligence, providing insight deep into your network for vision, knowledge and control of your network infrastructure. If, however, you are not ready for intelligence today but want the flexibility to add it later, the intelligent ready panel platform allows customers to evolve to intelligence deployments as their network needs change. Supporting architectures with shorter cords and cables and delivering improved performance, this new panel platform makes 10G easier – and life better – than ever before.

ORDERING INFORMATION:

Material ID	Product Number	Description	iPatch Ready	iPatch
760152561	360-IPR-1100-E-GS3-1U-24	360 1100GS3 24-Port Evolve Patch Panel	X	
760152579	360-IPR-1100-E-GS3-2U-48	360 1100GS3 48-Port Evolve Patch Panel	X	
760151308	360-IPR-1100A-E-GS3-1U-24	360 1100GS3 24-Port Evolve Angled Patch Panel	X	
760151753	360-IPR-1100A-E-GS3-2U-48	360 1100GS3 48-Port Evolve Angled Patch Panel	X	
760152355	360-iP-1100-E-GS3-1U-24	360 iPatch 1100GS3 24-Port Evolve Patch Panel		X
760152330	360-iP-1100-E-GS3-1U-48	360 iPatch 1100GS3 48-Port Evolve		X

ORDERING INFORMATION:

Material ID	Product Number	Description
760151167	360-IPR-1100-GS3-DM6	360 1100GS3 Evolve Distribution Module 6-Port
760155739	360-E-KIT-1U	360 1U Evolve Panel Kit for both GS6 and GS3
760155747	360-E-KIT-2U	360 2U Evolve Panel Kit for both GS6 and GS3
760152785	360-A-E-KIT-1U	360 Angled 1U Evolve Panel Kit for both GS6 and GS3
760152793	360-A-E-KIT-2U	360 Angled 2U Evolve Panel Kit for both GS6 and GS3
760152769	360-1100-LKP-1-24	360 1100 Evolve Panel - Label Kit (1-24) for both GS6 and GS3
760152777	360-1100-LKP-25-48	360 1100 Evolve Panel - Label Kit (25-48) for both GS6 and GS3
760104992	360-iP-UP-KIT-1100-24	360 iPatch Upgrade Kit for 360 1100 24-Port Panel, 10 Pack
760105015	360-iP-UP-KIT-1100-48	360 iPatch Upgrade Kit for the 360 1100 48-Port Panel, 5 Pack
760152280	360-iP-UP-KIT-E-24	360 iPatch Upgrade Kit for 360 Evolve 24-Port Panel, 10 Pack
760152298	360-iP-UP-KIT-E+PMAx-48	360 iPatch Upgrade Kit for 360 Evolve and PATCHMAX 48-Port Panels, 5 Pack
760152538	360-E-C-1U	360 Evolve Panel Front Cover 1U
760152546	360-E-C-2U	360 Evolve Panel Front Cover 2U

Note: iPatch Ready panels are upgradable to iPatch with the addition of the iPatch Upgrade Kits.

SYSTIMAX 360™ Modular Panel

The SYSTIMAX 360™ Modular Panel is part of the next generation SYSTIMAX 360 solutions platform. The 360 Modular Panel eliminates the need for separate tie wrap components and offers facilitated installation and panel dressing through simplified cable bundling. The 360 Modular Panel supports the deployment of InstaPATCH Cu pre-terminated copper solutions and features the elegant SYSTIMAX 360 design.



SYSTIMAX 360 Modular Panel, 24 Port



SYSTIMAX 360 Modular Panel, 24 Port, Rear View

ORDERING INFORMATION:

Material ID	Product Number	Description
760104273	360-MOD-1U-24	360 Modular 24 Port Patch Panel
760104463	360-MOD-1U-BEZEL	360 Modular Panel Bezel Kit
760104281	360-MOD-1U-LABEL	360 Modular Panel Label Kit
760109728	360-MOD-1U-LABEL-A4	360 Modular Panel Label Kit A4

SYSTIMAX 360™ GigaSPEED® XL PATCHMAX® GS3



SYSTIMAX 360 PATCHMAX GS3
24 Port Patch Panel



SYSTIMAX 360 PATCHMAX GS3
24 Port Patch Panel, rear view

The GigaSPEED® XL PATCHMAX® GS3 Panels offer easy cable routing and bundling utilizing the rear cable manager and are available in a 24 port configuration. The 360 PATCHMAX GS3 panels also support deployment of InstaPATCH® Cu pre-terminated copper.

The PATCHMAX GS3 panels accept four (4) PATCHMAX GS Distribution Modules which can be rotated forward, allowing front-access to the 110 type IDC terminals for easy cable termination. PATCHMAX GS Distribution Modules feature an innovative termination manager and rear housing which provides easier, faster, more reliable terminations and reduced variability in the placement and termination of cables to the panel.

The GigaSPEED XL PATCHMAX GS3 Panel's rear cable manager makes cable round and bundling easy. The panel is available in a 24 port (2U) configuration and 1 to 24 port labelling and identification.

ORDERING INFORMATION:

Material ID	Product Number	Description	iPatch Ready	iPatch
760102244	360-PM-GS3-2U-24	360 PATCHMAX GS3 24-Port Patch Panel	X	
760117366	360-PM-GS3-2U-48	360 PATCHMAX GS3 48-Port Patch Panel	X	
760123489	360-iP-PMAX-GS3-24	360 iPatch PATCHMAX GS3 24-Port Panel		X
760123497	360-iP-PMAX-GS3-48	360 iPatch PATCHMAX GS3 48-Port Panel		X

ORDERING INFORMATION:

Material ID	Product Number	Description
760108993	360-PM-KIT-2U-24	360 PATCHMAX 2U Panel Kit, 24-Port
760117408	360-PM-KIT-2U-48	360 PATCHMAX 2U Panel Kit, 48-Port
760102269	360-PM-GS3-DM	360 PATCHMAX GS3 6-Port Distribution Module Kit
760117382	360-PM-GS3-DM-12	360 PATCHMAX GS3 12-Port Distribution Module Kit
760101931	360-1100-BEZEL-1U	360 1100 Bezel Kit - 1U
760101949	360-1100-BEZEL-2U	360 1100 Bezel Kit - 2U
760104398	360-RCM-BM	360 Rear Cable Management (Bar Mountable)
760104737	360-RCM-RM	360 Rear Cable Management (Rack Mountable)
760152298	360-iP-UP-KIT-E+PMAX-48	360 iPatch Upgrade Kit for 360 Evolve and PATCHMAX 48-Port Panels, 5 Pack
760152306	360-iP-UP-KIT-PMAX-2U-24	360 iPatch Upgrade Kit, PATCHMAX 24-Port, 2U

Commscope® M4800/M4800A 1U High Density Modular Panel

Unlike traditional 48 port panels, the M4800/4800A panels occupy only 1 U of rack space. The M4800-1U-GS panels accommodate GigaSPEED XL and X10D MGS Information Outlets while the M4800-1U-PS panels accommodate PowerSUM Information Outlets.



Commscope M4800 1U High Density Modular Panel



Commscope M4800A 1U High Density Modular Panel

features and benefits

- Available in a 48 port (1U) configuration
- Angled or flat
- Supports both 10G, 1G and 100M applications
- Supports all copper modular connectors
- Panel kits include low profile module stuffer caps
- InstaPATCH® Cu friendly design which coincides with scalability
- Optional rack mountable rear cable management system
- Offers both front and rear accessibility
- Qualifies for Commscope's 20-Year Extended Warranty and Applications Assurance when included as part of a registered solution
- Compatible with DYMO Labeling Solution

SPECIFICATIONS

Height	1.75 in (4.45 cm)	1.75 in (4.45 cm)
Width	19 in (48.26 cm)	19 in (48.26 cm)
Depth (not including cable management)	2.12 in (5.38 cm)	5.63 in (14.3 cm)
Flammability Rating	UL rated 94 V-0	UL rated 94 V-0
Operating Temperature	14°F to 140°F (-10°C to 60°C)	14°F to 140°F (-10°C to 60°C)
Storage Temperature	-40°F to 158°F (-40°C to 70°C)	-40°F to 158°F (-40°C to 70°C)
Humidity	95% (non-condensing)	95% (non-condensing)

ORDERING INFORMATION:

Material ID	Product Number	Description
760105429	M4800-1U-GS*	M4800 1 U 48-Port Panel - GS
760104307	M4800-1U-PS**	M4800 1 U 48-Port Panel - PS
760109744	M4800A-1U-GS*	M4800A 1 U Angled 48-Port Panel - GS
760109736	M4800A-1U-PS**	M4800A 1 U Angled 48-Port Panel - PS
760105486	MGS-CAP-10	MGS Cap Kit – LP, pack of 10
760105478	MPS-CAP-10	MPS Cap Kit – LP, pack of 10
760105437	MPS-CAP-50	MPS Cap Kit – LP, pack of 50
760104737	360-RCM-RM	Rear Cable Management System (Rack Mountable)
760122713	RMVITool	Outlet Removal Tool Kit (5 pack)

* Note: M4800-GS Panels for use with SYSTIMAX Category 6A and Category 6 information outlets.

** Note: M4800-PS Panels for use with SYSTIMAX Category 5E information outlets.

Commscope® M2000 Modular Panel



Commscope M2000-24 1U



Commscope M2000-24 1U Angled



Commscope M2000-48 2U

The M2000 Modular Patch Panel is a panel designed for Commscope outlets that can be configured for copper, fiber, or both and is available in 24-port (M2000-1U) and 48-port (M2000-2U) versions. Both the M2000-1U and M2000-2U panels mount in a 19-inch (483 mm) rack with universal hole spacing.

The M2000-1U and M2000-2U Panels include M2000 Cable Organizers. The M2000 Cable Organizer is a molded plastic design that is snapped into each 6-port bezel. The 24 port 1U panel includes 4 cable organizers and the 48 port 2U panel includes 8 cable organizers. The six 4-pair cables from each bezel are routed and positioned to the cable organizer. Cable ties are included to secure the cables.

The M2000 angled panels include a cable management bar (cable organizers are not included with the M2000 1U and 2U angled panels). These patch cord managers are metal rings that mount to the front of the panel. 5 patch cord managers are used for each 24 port 1U panel.

features and benefits

- Electrical performance guaranteed to meet or exceed the channel specifications of Amendment 1 to ISO/IEC 11 80:2001 Class E_A, and ANSI/TIA-568-C.2 Category 6A up to 500 MHz when used as part of a GigaSPEED X10D U/UTP Channel in registered SYSTIMAX installations
- Available in 24-port and 48-port configurations
- Labeling and identification for each port
- Supports copper and fiber connectors
- Compatible with DYMO Labeling Solution
- Electrical performance guaranteed to meet or exceed ANSI/TIA-568-C.2 Category 6 and ISO/IEC Category 6/Class E specifications when used with MGS400 connectors

SPECIFICATIONS

Height	24 Port: 1.75 inches (44.1mm) 48 Port: 3.5 inches (88.9mm)
Width	19 inches (483 mm)
Depth	1.2 inches (30.48 mm)

ORDERING INFORMATION:

Material ID	Product Number	Description
760049932	M2000-24 1U M2000	24-Port 1U Panel
760049940	M2000-48 2U M2000	48-Port 2U Panel
760049957	M2000A-24 1U (Angled)	M2000A 24-Port 1U Panel (angled)
760049965	M2000A-48 2U (Angled)	M2000A 48-Port 2U Panel (angled)
760054627	M2000 Cable Mgt Bar	M2000 Cable Management Bar
760060392	M2000 Custom Label Kit	M2000 Panel Custom Label Kit
760069278	M2000 1U Cord Manager	Kit M2000 1U Cord Manager Kit
760073486	M2000 2U Cord Manager	Kit M2000 2U Cord Manager Kit
760091504	Angled Panel Cover	Angled Panel Cover

Commscope® M2100 Modular Panel



Commscope M2100 24-Port Panel



Commscope M2100 48-Port Panel

The M2100 Modular panel is available in a 24-port 1U and 48-port 2U configuration with integrated horizontal front cord managers, eliminating the need for separate cord management. The M2100 includes 4 or 8 plastic rear cable organizers, each holding up to six 4-pair cables. The M2100 also includes vertical mounting labels and label holders providing space for identification of each port. Port designations can be printed on the label sheet. Individual port labels are trimmed from the label sheet, placed in the label area, and secured by the clear label holder. If adhesive labeling is desired, adhesive labels can be applied to the label holder. This panel supports copper M-series outlets as well as fiber applications.

features and benefits

- Consists of a rack mountable base unit with front integrated cord management
- Supports Category 5e, Category 6 and Category 6A installations
- Bezel labels with label holders included for standard port numbering
- Labeling and identification provided for each port
- Mounts to 1 9-inch (483 mm) equipment rack with universal hole spacing
- Supports copper and fiber connectors
- Accepts up to 24 or 48 M-Series information outlets and other Commscope outlets for patching and interconnection in the Data Center, telecommunications closet or equipment room
- Compatible with DYMO Labeling Solution

ORDERING INFORMATION:

Material ID	Product Number	Description
760101220	M2100-24	M2100-1U Modular Patch Panel
760077842	M2100-48	M2100-2U Modular Patch Panel



www.commscope.com

Visit our Web site or contact your local Commscope representative for more information.

© 2011 Commscope, Inc. All rights reserved.

All trademarks identified by ® or ™ are registered trademarks or trademarks, respectively, of Commscope, Inc.

This document is for planning purposes only and is not intended to modify or supplement any specifications or warranties relating to Commscope products or services.

03/11