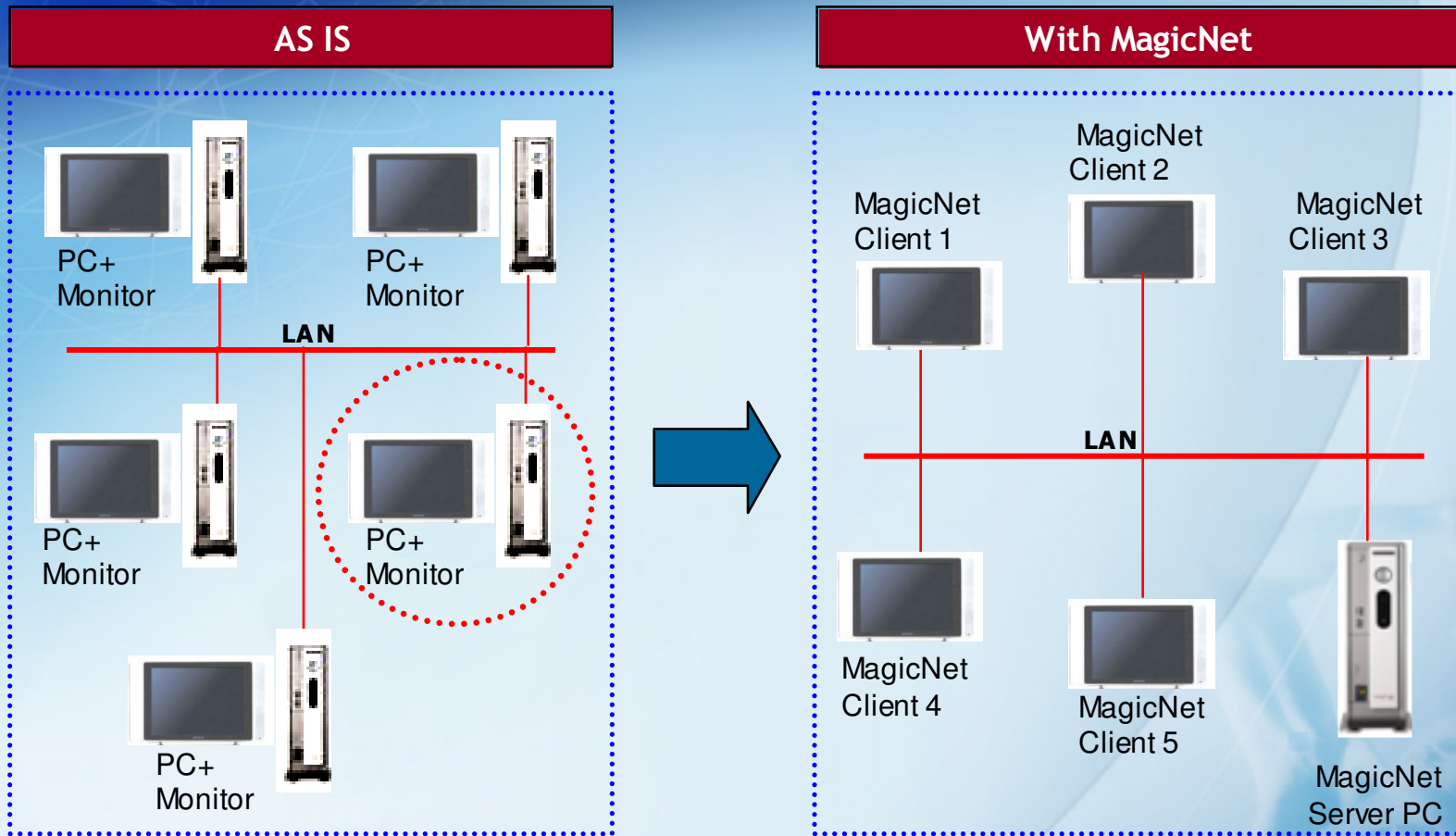


Design Concept



- Cost Effective Solution for Multi-Display Network (eliminates multiple sources and distribution.)
- Easy to schedule content, Power ON/OFF, and Input Selection by Server S/W
- Simple Configuration through LAN (100base-T Ethernet)

System Requirement - Server

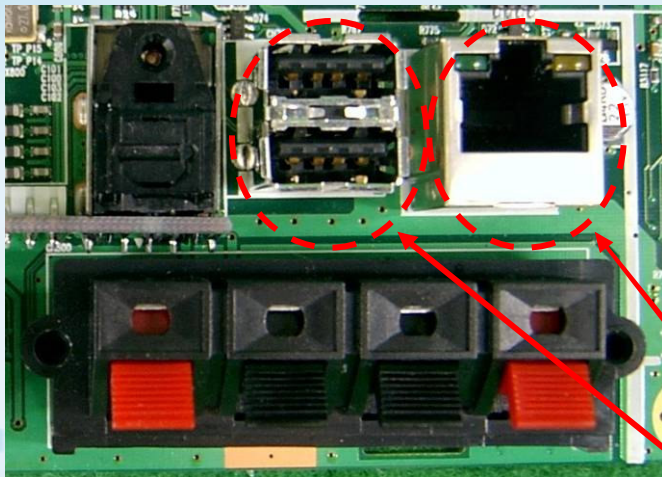
- **Server PC Requirement**
 - Windows 2000/XP/2003/NT
 - Over 1.8GHz CPU and 256MByte RAM
(Recommend: 3GHz CPU, 512MB RAM)
 - 10/100Base-T Ethernet
 - Over 10 GByte HDD



System Specification - Client

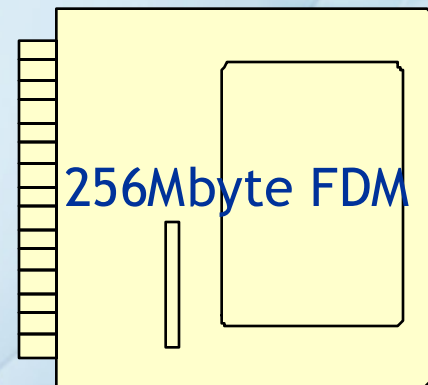
Client (Network Board integrated in Monitor)

- WinCE.NET 5.5
- USB 2.0 (for contents memory expansion)
- 24bit RGB Interface with Video Scalar
- 40"/46" WXGA LCD Monitor
- Approximately 200Mbyte of FDM memory can be used as local storage

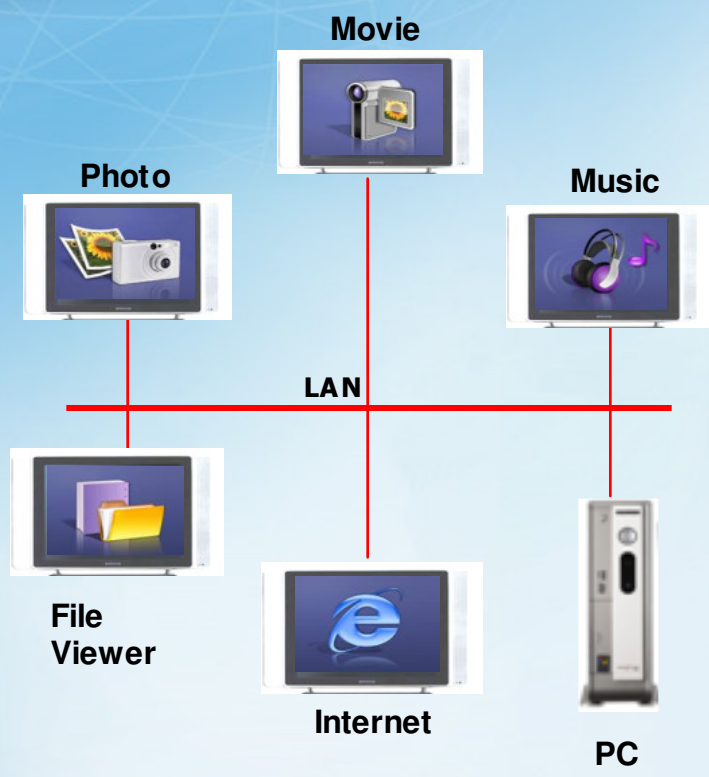


RJ45

USB 1, 2



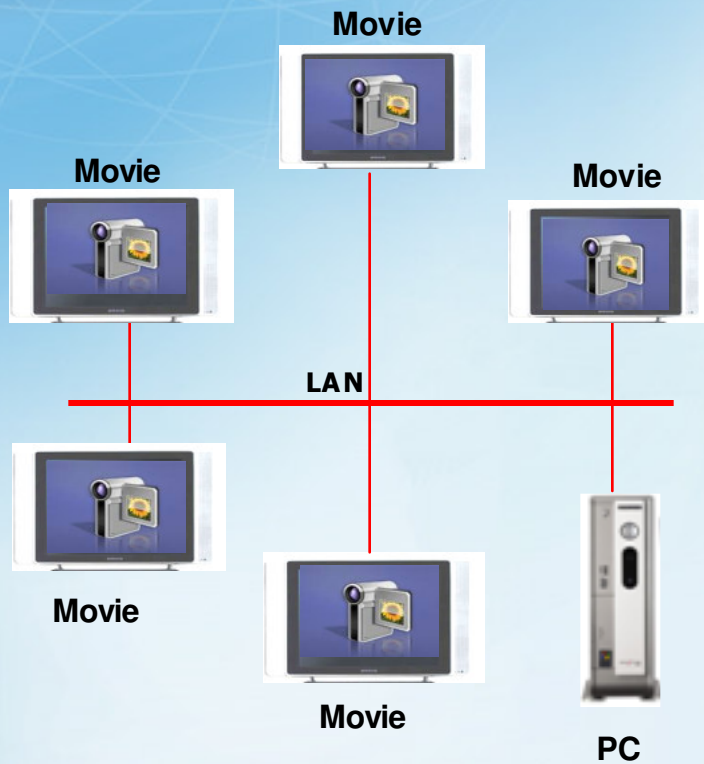
Contents Supported Formats



	File format	Resolution	Bit rate	
			CBR	VBR
VIDEO	MPEG 1	720 x 480 or less	9 Mbps or less	
	MPEG 2 (PS)			
	Divx 4.xx			
	Divx 5.xx			
AUDIO	MP3	-	Available	Not Available
PHOTO	JPEG	3500 x 2625 or less	-	-
	BMP		-	-
OFFICE	MS-Word, Power Point, Excel Acrobat Viewer, HTML Viewer			

- ❗ For MPEG2, only PS (Program Stream) is supported and TS (Transport Stream) is not.
- ❗ For JPEG, the EXIF Format (Digital Camera) is not supported. (However, Samsung digital cameras are supported)

Network Bandwidth (example if streaming)



	Bit rate	Normal	Maximum
VIDEO	4 Mbps	10	20
	6 Mbps	8	16
	9 Mbps	5	9
AUDIO	-	20 or more	-
PHOTO	-		-
OFFICE	-		-

• Test Environment

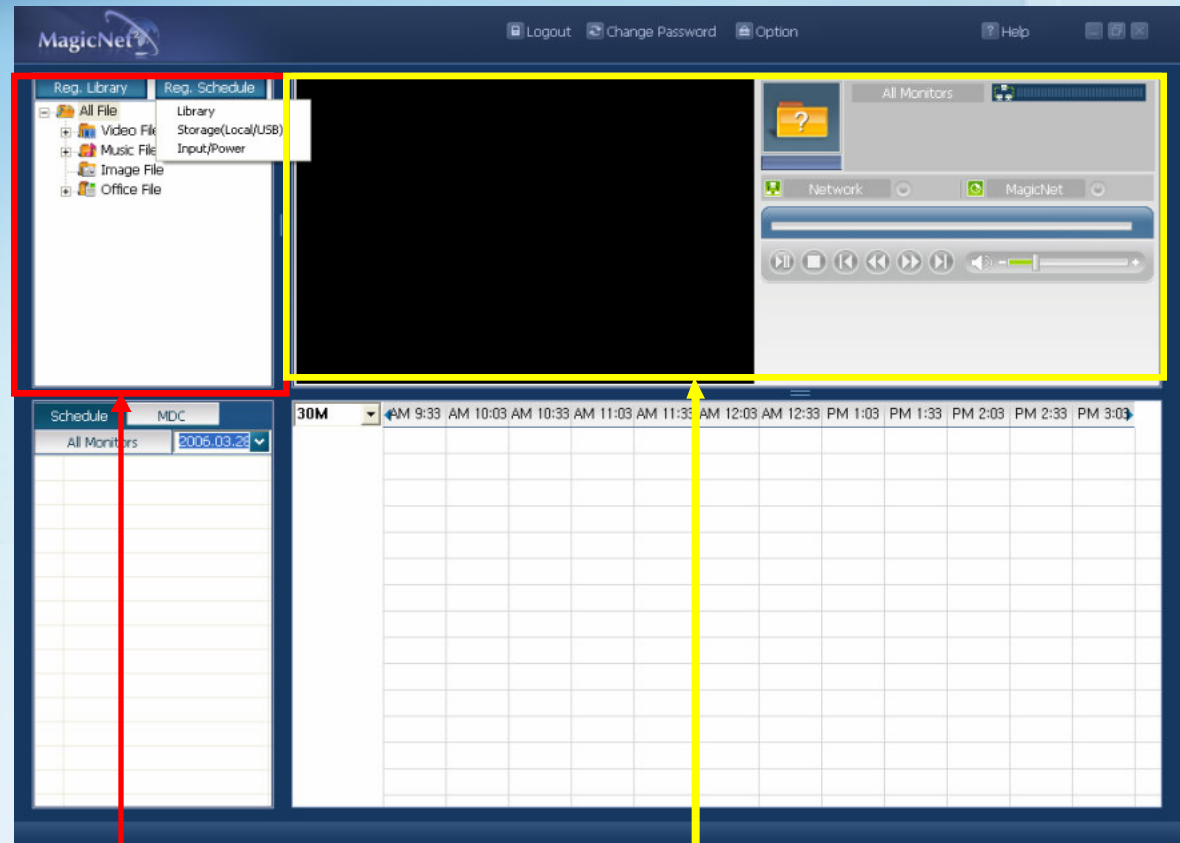
1) Server PC :

- 3GHz CPU, 512MB RAM, 100 base-T Ethernet

2) Network status

- Normal : 50% ~ 60% network bandwidth
- Maximum: 90% or more network bandwidth

MagicNet Scheduling Software Interface



■ Contents Scheduling

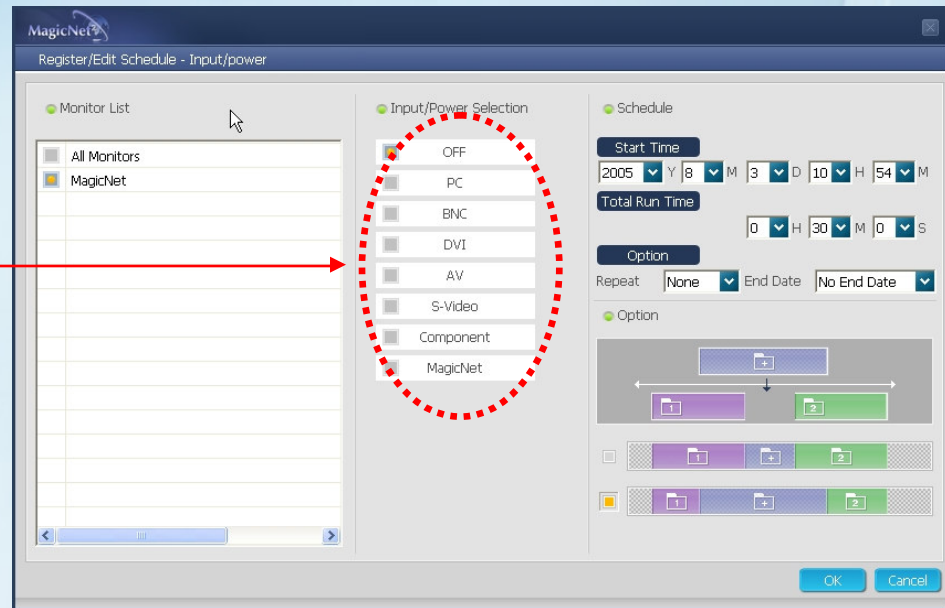
- Server HD, Display Local Memory, USB Memory

■ Preview Window

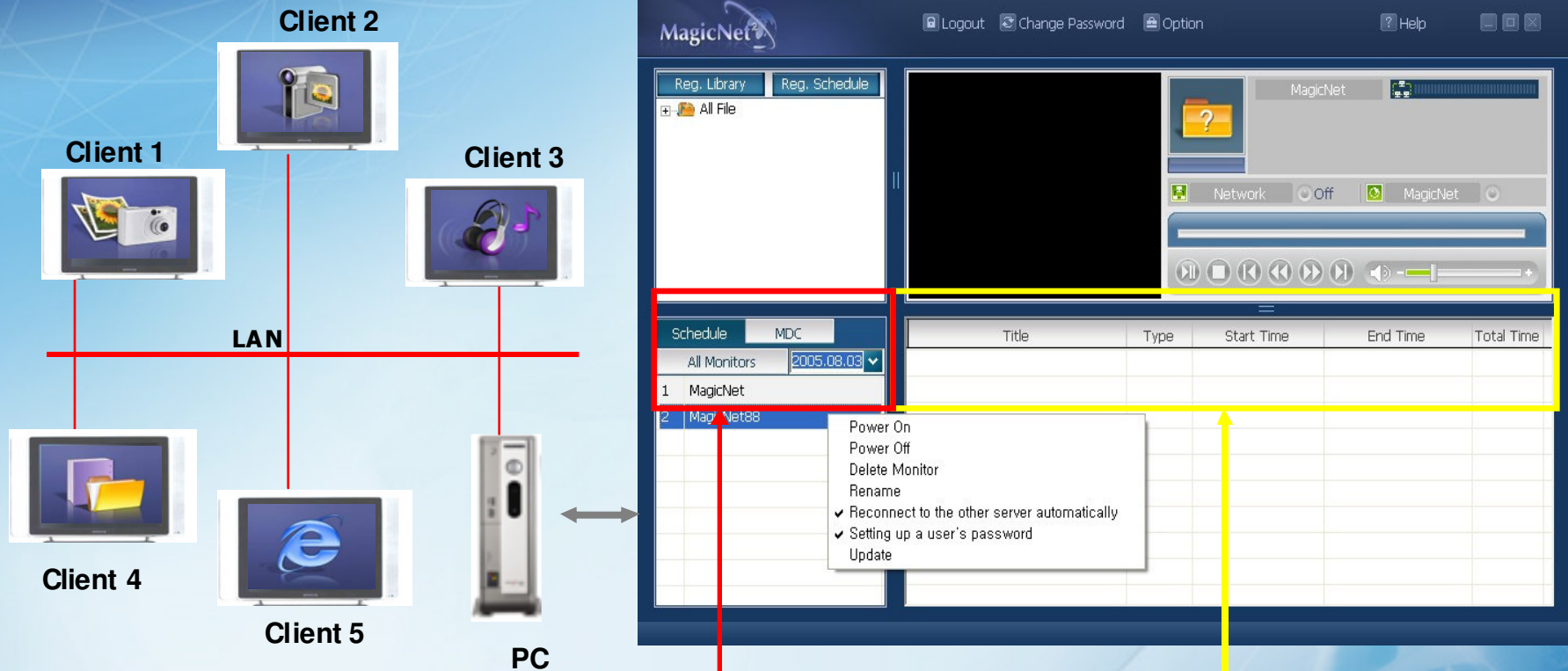
- Client Monitoring
- Network Bandwidth
- Control Function

MagicNet Scheduling Software Interface

- Schedule Input Source / Power On & Off



MagicNet Scheduling Software Interface



▪ Asset Management

- Power On/Off
- Monitoring

▪ Contents Scheduling

- for 30days

▪ Schedule Management

- Cut, Move, Insert, etc.

MagicNet Scheduling Software Interface



- Control all features on monitor through Multiple Display Control (MDC)



- Current Setting

Monitor	Source	Image	Mute	Volume	PIP
MagicNet	MagicNet	Wide	OFF	10	OFF/AV

Multi Display Control

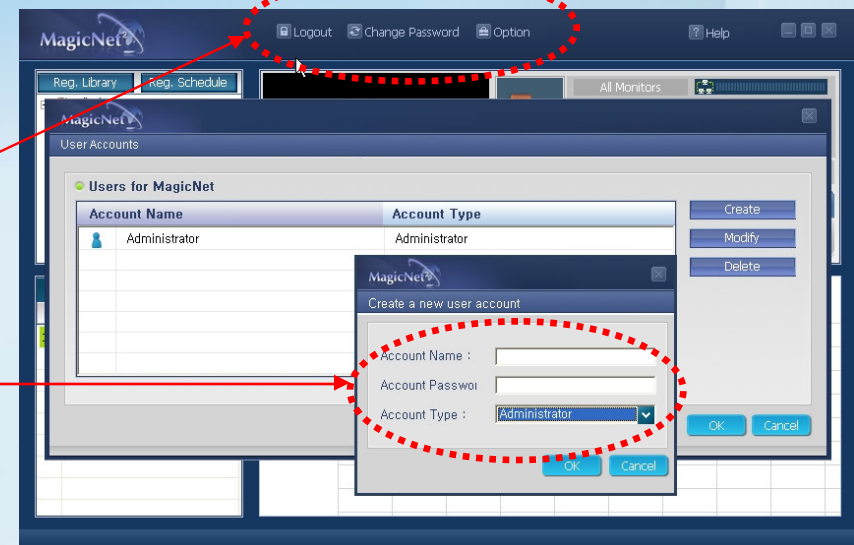
- Each Connected Monitor

- Power - On/Off , Volume
- Source - PC, BNC, .. MagicNet
- Image - Size PC/Video
- Time - Current, On, Off,
- PIP - Size, Source
- Setting - Picture, Audio, Image lock
- Maintenance - Lamp control, Scroll, Video Wall

MagicNet Scheduling Software Interface

Multi User with limited rights for security

- Administrator
- Power User
- Operator



Account Type

Scope

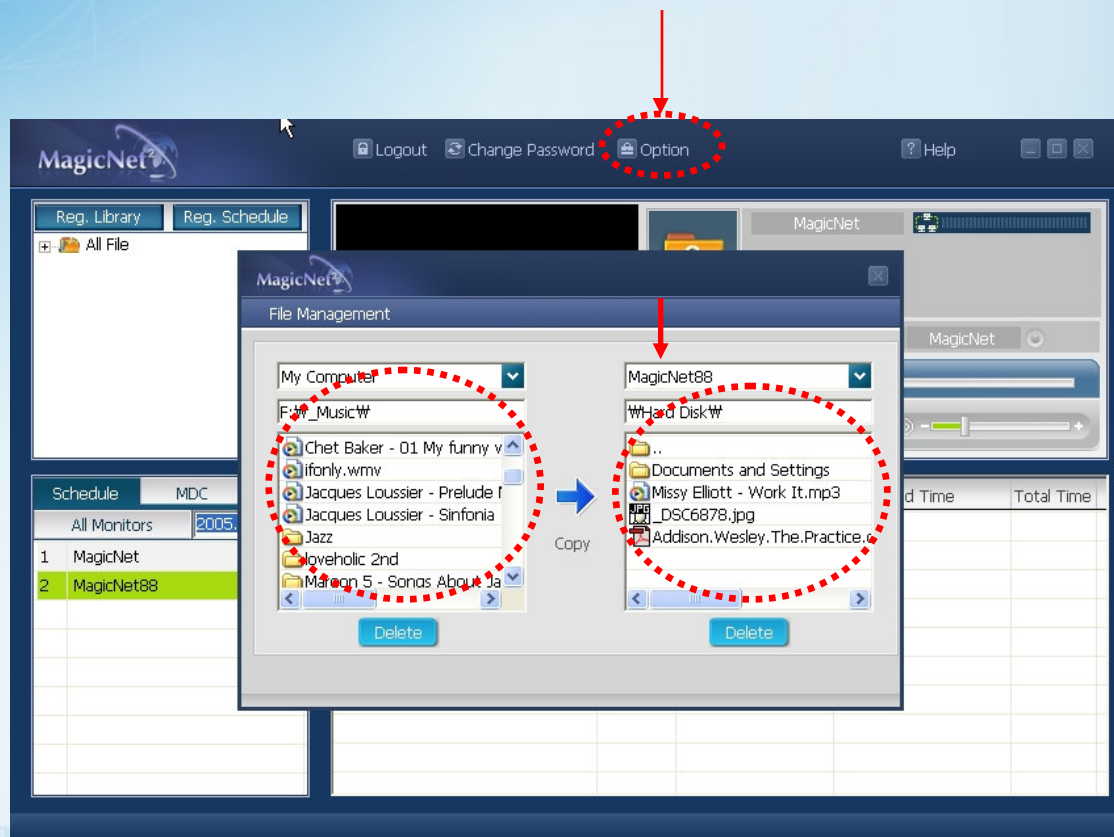
Administrator	You have the authority to use all functions of MagicNet.
Power User	You are not authorized to use the Options menu and the Update function from among the MagicNet functions
Operator	You are not authorized to use the right mouse button click in the Library Registration, Options menu, MDC and Monitor List from among the MagicNet functions.

MagicNet Scheduling Software Interface

SAMSUNG

File Manager

- Copy and Delete the files
- Server ↔ Server, Server → Client, Client in FDM ↔ Client Local USB



Client Menu - Main



MagicNet



Network



Device



Internet



Setup



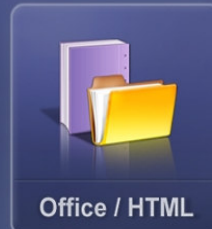
Photo



Music



Movie



Office / HTML

Move

Enter

Return

Client Menu - Setup

SETUP Network

- Schedule View
- TCP/IP
- Homepage
- Network Setup

Title	Category	Start	End	Total
-------	----------	-------	-----	-------

Move Enter Return

SETUP Network

- Schedule View
- TCP/IP
- Homepage
- Network Setup

TCP/IP

DHCP

STATIC

IP Address: _____

Subnet Mask: _____

Default Gateway: _____

DNS 1: _____

DNS 2: _____

OK Cancel

0-9 Edit Enter Return

SETUP Network

- Schedule View
- TCP/IP
- Homepage
- Network Setup

Home page

Address:

OK Cancel

0-9 Edit Enter Return

SETUP Network

- Schedule View
- TCP/IP
- Homepage
- Network Setup

Network Setup

Server Name:

Monitor Name:

OK Cancel

0-9 Edit Enter Return

Client Menu (Pull Function) - Photo

PHOTO Network



770 x 768
2004-10-07 PM 05:47:08
1 / 14

1 / 2 Information

Move Enter Return



Original Slide Show Interval Rotation Zoom Close

Client Menu (Pull Function) - Movie

The client menu interface is displayed on a dark blue background. At the top left, there is a 'MOVIE' header with a small icon of a camera and a film strip. To the right of the header is a 'Network' icon and label. Below the header, there is a search bar containing the text 'brandy'. The main area of the menu is divided into two columns. The right column features a video thumbnail showing a woman's face partially obscured by a dense network of white cables. Below the thumbnail, there is a list of metadata: a play button icon followed by '00:05:21', a clock icon followed by '2004-10-07 PM 06:01:00', and a document icon followed by '1 / 1'. At the bottom of the menu, there is a navigation bar with three buttons: 'Move' with a double-headed arrow, 'Play' with a play button icon, and 'Return' with a return key icon. A progress bar is visible above the 'Move' button, showing '1 / 1'.

The movie player interface is shown in a dark theme. The video content is a woman's face partially obscured by a dense network of white cables. In the bottom left corner of the video frame, there is text: '# JEWEL SONG', 'BoA', and 'avex trax'. In the top right corner of the video frame, there is a logo that says '12.11 OUT'. Below the video frame is a control bar with several buttons: a play/pause button (highlighted in yellow), a stop button, a previous button, a next button, a 'Full Size' button, and a 'Close' button. To the right of these buttons is a progress bar showing '00:00:11 / 00:04:10'.

Client Menu (Pull Function) - Music/Office

MUSIC Network

All For You
someday




00:04:17
2004-10-07 PM 06:01:57
1 / 2

1 / 1

Move Play

OFFICE / HTML Device

PowerPoint



2004- 3-24 AM 0:56:56
1 / 1

Information

Move Enter Return

General Specifications - Display



SyncMaster 400Pn / 460Pn	
Resolution	1366x768@60Hz
Colors	16.7M
Brightness	500cd/m ²
Contrast	800:1
Viewing Angle	170°/170°
Response Time	8ms
PC Signal Input	Analog/Digital (DVI-D)
Power Consumption	300 / 330 Watt (Max)
DPMS	5 Watt
Product Life Time	50,000 Hrs
Speaker	10W x 2 Ch
Weight	30 kg

SyncMaster 400Pn / 460Pn	
Input	<ul style="list-style-type: none"> • PC: D-Sub, DVI-D, BNC • Video: S-video, CVBS Component
Cabinet Color	Black 1 Tone Color
Power Supply	Built-in Power
Special Feature	<ul style="list-style-type: none"> • MagicNet (Network) • MDC (RS232C) • DNle Pro • VR Dolby / BBE • PIP, PBP, POP • Pivot • NTSC/PAL/SECAM • Signal Balance
VESA	200mm x 200mm
Accessory (Option)	Speaker, Stand Wall Mounting Kit

