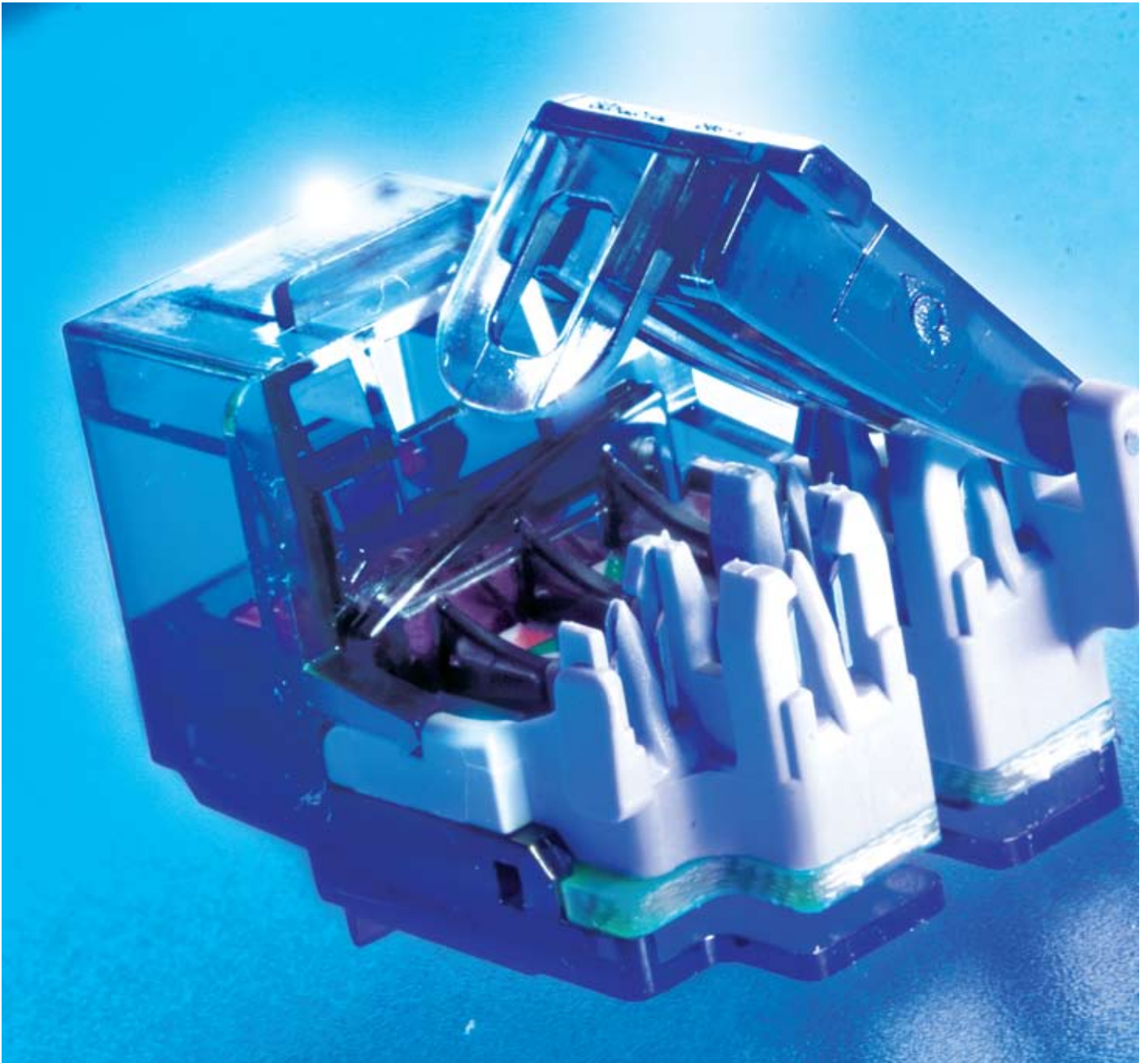


Category 5e Cabling Solutions

CP
CIGAPLUS

Brand-Rex 



A trusted voice in a world of confusion

Brand-Rex has developed the enviable position of being Europe's premier, home based provider of 'best in class' communication infrastructure solutions. This position has been gained through a core philosophy of delivering maximum performance through design excellence. With a reputation as one of the most respected expert voices within the technical community, Brand-Rex has built a business and product ethos around trust. A high level of knowledge, experience and integrity, developed during three decades of networking deployment, allows Brand-Rex to consistently deliver first class solutions and a first class service to customers.

GigaPlus

GigaPlus is the Brand-Rex premium performance Class D / Category 5e Structured Cabling System. Its performance significantly exceeds the requirements specified in the current published standards.

When Brand-Rex introduced GigaPlus in 1999, Gigabit Ethernet was held in the same esteem as the recently ratified 10 Gigabit Ethernet standard. A team of engineers developed GigaPlus to offer the market a high performance, ultra reliable solution that would stand up to the demands of the then revolutionary Gigabit Ethernet application. Today Category 5e is a commoditised product, however not all products perform in the same way. With the influx of cheaper systems claiming to support Gigabit Ethernet applications, customers need the assurance that the system will meet their requirements. GigaPlus from Brand-Rex offers guaranteed performance, that not only meets the requirement of the relevant standard, but offers the comfort of substantial headroom. In the current market GigaPlus represents a sound investment for general office horizontal cabling and residential cabling for networks running Gigabit Ethernet applications.



Performance and Standards Compliance

Structured cabling systems comprised of GigaPlus cables, patch cords and connectivity are designed to be compliant with the current sets of Class D / Category 5e published standards requirements as an absolute minimum. The systems support all protocols defined in current editions, and amendments, of ISO 11801 : 2002, ANSI TIA/EIA 568B.2 : 2002 and EN50173-1-1 : 2002 (including IEEE802.3ab Gigabit Ethernet) and are fully backward compatible.

Warranty

GigaPlus is covered under the highly valued Brand-Rex 25 year warranty scheme. The Brand-Rex warranty is unrivalled in the field providing the highest assurance of installation quality and application performance.

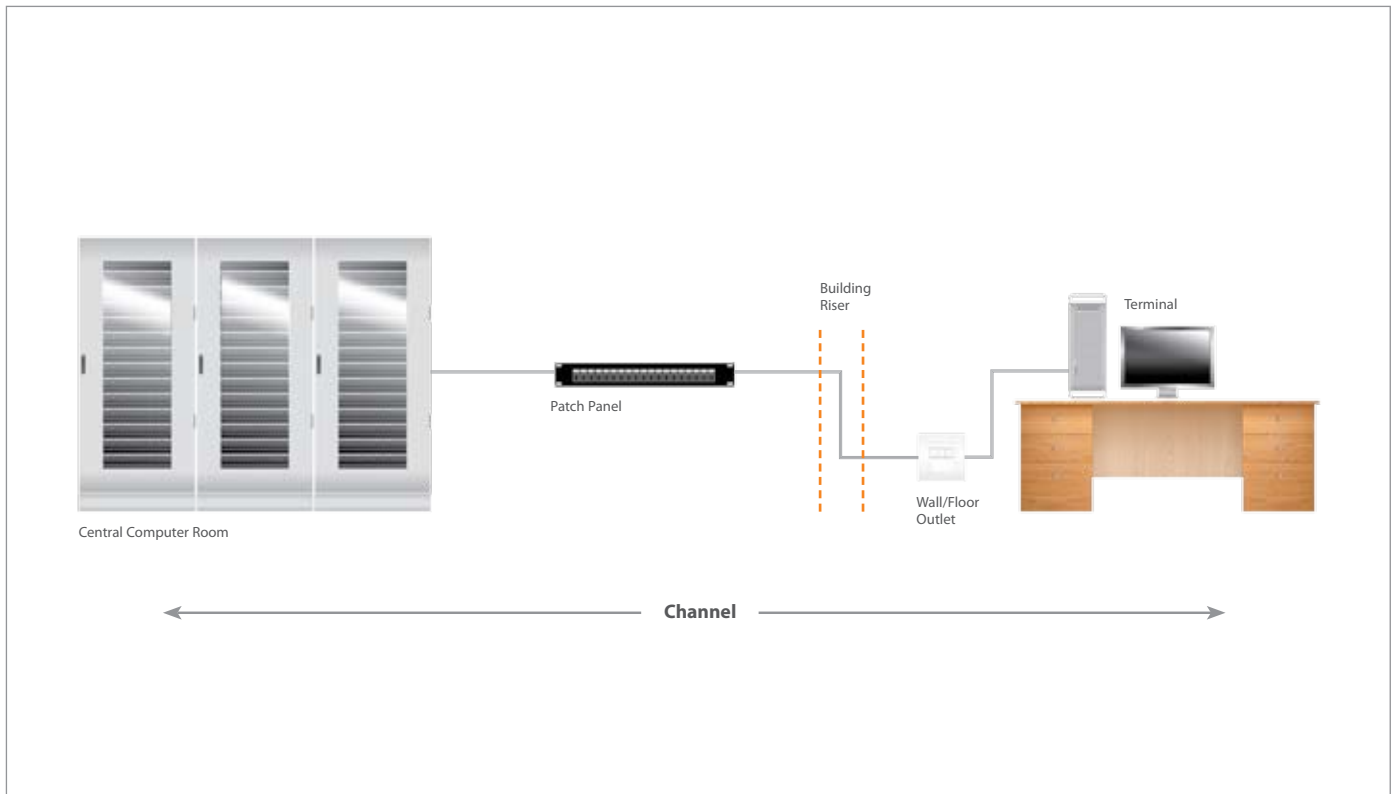
Features

- Comprehensive product range offering both unshielded and shielded solutions
- Independent 3rd party approvals from 3P, Denmark
- Reduced bit error rate through standards' exceeding headroom
- Proven reliability and performance

Applications

- General office horizontal cabling
- Industrial cabling
- Residential cabling
- Building management system cabling

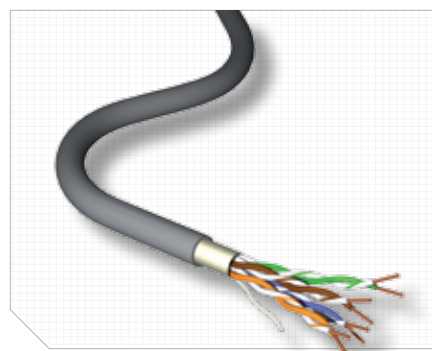
APPLICATIONS



Channel Performance

Frequency (MHz)		1	4	10	16	20	31.25	62.5	100	125	155	175	200	250
Attenuation (dB)	Typical	2.0	4.0	6.4	8.1	9.1	11.5	16.6	21.3	24.0	27.0	28.8	31.0	32.5
	Spec	2.3	4.6	7.3	9.3	10.4	13.2	19.1	24.7	na	na	na	na	na
NEXT (dB)	Typical	73.6	62.3	54.9	51.0	49.2	45.5	39.8	35.9	34.0	32.2	31.2	30.1	30.1
	Spec	60.0	53.5	47.0	43.6	42.0	38.7	33.6	30.1	na	na	na	na	na
PSNEXT (dB)	Typical	70.6	59.3	51.9	48.0	46.2	42.5	36.8	32.9	31.0	29.2	28.2	27.1	29.7
	Spec	57.0	50.5	44.0	40.6	39.0	35.7	30.6	27.1	na	na	na	na	na
Return Loss (dB)	Typical	22.0	22.0	22.0	22.0	22.0	20.1	17.1	15.0	14.0	13.1	12.6	12.0	11.8
	Spec	17.0	17.0	17.0	17.0	17.0	15.1	12.1	10.0	na	na	na	na	na
ELFEXT (dB)	Typical	70.0	57.9	50.0	45.9	44.0	40.1	34.1	30.0	28.0	26.2	25.1	24.0	26.4
	Spec	57.4	45.3	45.3	33.3	31.4	27.5	21.5	17.4	na	na	na	na	na
PSELFEXT (dB)	Typical	67.0	54.9	47.0	42.9	41.0	37.1	31.1	27.0	25.0	23.2	22.1	21.0	24.6
	Spec	54.4	54.4	37.4	30.3	28.4	24.5	18.5	14.4	na	na	na	na	na
Propagation Delay (ns)	Typical	520	510	505	503	502	501	500	500	500	500	500	500	505
	Spec	<555	<555	<555	<555	<555	<555	<555	<555	na	na	na	na	na
Delay Skew (ns)	Typical	<20	<20	<20	<20	<20	<20	<20	<20	<20	<20	<20	<20	<20
	Spec	<50	<50	<50	<50	<50	<50	<50	<50	na	na	na	na	na
ACR (dB / 100m)	Typical	71.6	58.3	48.5	42.9	40.0	34.0	23.2	14.6	10.0	5.2	2.4	-0.9	-0.8
PSACR (dB / 100m)	Typical	68.6	55.3	45.5	39.9	37.0	31.0	20.2	11.6	7.0	2.2	-0.6	-3.9	-1.5
Alien NEXT (dB)	Typical	103.6	92.3	84.9	81.0	79.2	75.5	69.8	65.9	64.0	62.2	61.2	60.1	59.2

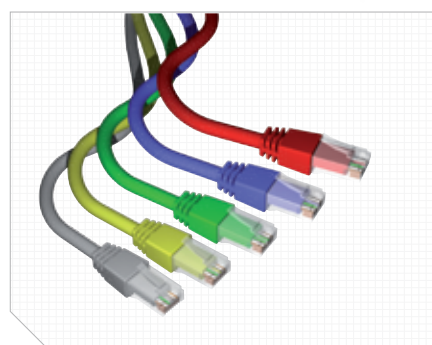
GIGAPLUS PRODUCT RANGE

**Cables**

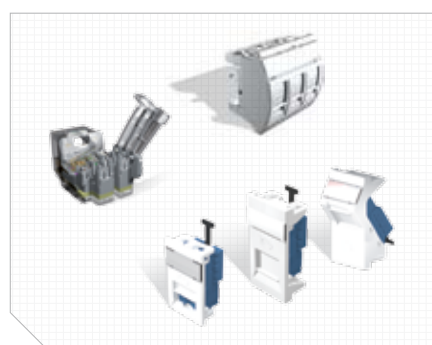
A range of premium grade shielded and unshielded Class D / Category 5e cable to support Gigabit Ethernet protocol. For installation in horizontal or building backbone areas. Available as SF/UTP, F/UTP and U/UTP.

Cables comply to:

- ISO/IEC 11801:2002
- ISO/IEC 61156-5
- EN50173-1:2002
- EN50288-3-1
- ANSI/TIA/EIA 568B.2:2002

**Patch Cords**

All Brand-Rex patch cords employ independently verified Class D / Category 5e cable, and are manufactured using standards' compliant, RJ-45 modular plugs. GigaPlus patch cords are available in shielded or unshielded construction and with stranded or solid core. A blade patch cord option is available for high density patching applications. Our factory-made and tested patch cords offer you guaranteed quality and superior performance and carry a no quibble guarantee.

**Snap-in-Jacks & Outlets**

GigaPlus shielded and unshielded snap-in-jacks range offer independently verified Class D / Category 5e component performance. The jacks are compatible with all Brand-Rex style faceplates, floorboxes and modules. All feature a Universal IDC punchdown block.

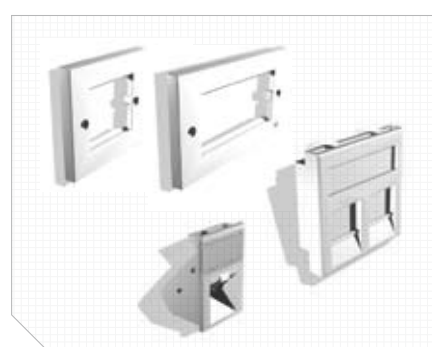
The range includes a unique tool-free jack where no termination tool is necessary and a range of slimline shuttered modules.

Triple Shuttered Outlet

- High Density outlet solution - up to three shuttered RJ45 outlets in a single module

**Patch Panels**

A range of 19" rack mounted patch panels offering true Class D / Category 5e component performance. Available with or without integral cable management, and with LSA, 110 or Universal IDC punchdown blocks. All outlets are numerically identified with an additional writeable surface for ease of port naming.

**Modules and Faceplates**

Brand-Rex supplies a comprehensive range of plastic accessories to provide an outlet solution for wall, trunking and floor box applications. We also supply a full range of European and UK faceplates.

For the full range of copper accessories please see our catalogue.

GIGAPLUS PRODUCT PART NUMBERS

Cables

	PVC	LSOH - HF1	LSOH - HF3
U/UTP, 100 Ω, 4x2xAWG 24/1 Cable	GPU	GPU - HF1	GPU - HF3
F/UTP, 100 Ω, 4x2xAWG 24/1 Cable	GPF	GPF - HF1	GPF - HF3
SF/UTP, 100 Ω, 4x2xAWG 24/1 Cable	GPS	GPS - HF1	GPS - HF3

Availability

305m Box	500m Box	500m Reel	1000m Reel
✓	✓	✓	✓
✓	-	✓	✓
-	-	✓	✓

Patch Cords

	Red	Blue	Green	Yellow	Grey
24 AWG U/UTP - 1.0m	GPCPCU010-111H	GPCPCU010-444H	GPCPCU010-555H	GPCPCU010-666H	GPCPCU010-888H
24 AWG U/UTP - 2.0m	GPCPCU020-111H	GPCPCU020-444H	GPCPCU020-555H	GPCPCU020-666H	GPCPCU020-888H
24 AWG U/UTP - 3.0m	GPCPCU030-111H	GPCPCU030-444H	GPCPCU030-555H	GPCPCU030-666H	GPCPCU030-888H
24 AWG U/UTP - 5.0m	GPCPCU050-111H	GPCPCU050-444H	GPCPCU050-555H	GPCPCU050-666H	GPCPCU050-888H
26 AWG F/UTP - 1.0m	GPCPCF010-111H	GPCPCF010-444H	GPCPCF010-555H	GPCPCF010-666H	GPCPCF010-888H
26 AWG F/UTP - 2.0m	GPCPCF020-111H	GPCPCF020-444H	GPCPCF020-555H	GPCPCF020-666H	GPCPCF020-888H
26 AWG F/UTP - 3.0m	GPCPCF030-111H	GPCPCF030-444H	GPCPCF030-555H	GPCPCF030-666H	GPCPCF030-888H
26 AWG F/UTP - 5.0m	GPCPCF050-111H	GPCPCF050-444H	GPCPCF050-555H	GPCPCF050-666H	GPCPCF050-888H
26 AWG SF/UTP - 1.0m	GPCPCS010-111H	GPCPCS010-444H	GPCPCS010-555H	GPCPCS010-666H	GPCPCS010-888H
26 AWG SF/UTP - 2.0m	GPCPCS020-111H	GPCPCS020-444H	GPCPCS020-555H	GPCPCS020-666H	GPCPCS020-888H
26 AWG SF/UTP - 3.0m	GPCPCS030-111H	GPCPCS030-444H	GPCPCS030-555H	GPCPCS030-666H	GPCPCS030-888H
26 AWG SF/UTP - 5.0m	GPCPCS050-111H	GPCPCS050-444H	GPCPCS050-555H	GPCPCS050-666H	GPCPCS050-888H

For blade server option simply add 'B' to the end of the product part numbers above.

Patch Cords Part Number Format

GPC-PC-A-bbb-cde-F						
A - Cord Type	bbb - Cord Length	cde - Colour Scheme			F - Speciality Tag	
U 24AWG UTP	010 1 metre	(c) Cable	(d) Boot 1	(e) Boot 2	S	Solid
F 26AWG FTP	020 2 metre	1 Red	1 Red	1 Red	X	Crossover
S 26AWG STP	030 3 metre	4 Blue	4 Blue	4 Blue	H	Halogen Free
	050 5 metre	5 Green	5 Green	5 Green	HB	Blade Boot
	Additional lengths on request	6 Yellow	6 Yellow	6 Yellow	-	Standard
		8 Grey	8 Grey	8 Grey	-	-
Additional colours on request						

Snap-in-Jacks

	Unshielded	Shielded
Snap-in-Jack LSA Style - Black	GPCJAKU0K2	GPCJAKF0K2
Snap-in-Jack LSA Style - White	GPCJAKU0K3	-
Snap-in-Jack 110 Style - Black	GPCJAKU012	GPCJAKF012
Snap-in-Jack 110 Style - White	GPCJAKU013	-
Lead Frame Snap-in-Jack 110 Style - Black	GPCJAKU012LF	GPCJAKF012LF
Lead Frame Snap-in-Jack 110 Style - White	GPCJAKU013LF	GPCJAKF013LF
Tool-Free Snap-in-Jack - Grey	GPCJAKU002	-

Outlets

	Unshielded	Shielded
50mm x 25mm Shuttered Module - White	GPCSL062UB03	GPCSL062SB03
50mm x 25mm Shuttered Module - Black	GPCSL062UB02	GPCSL062SB02
38mm x 25mm Shuttered Module - White	GPCSL06CUB03	GPCSL06CSB03
38mm x 25mm Shuttered Module - Black	GPCSL06CUB02	GPCSL06CSB02
50mm x 25mm Angled Shuttered Module - White	GPCSLA62UB03	GPCSLA62SB03
50mm x 25mm Angled Shuttered Module - Black	GPCSLA62UB02	GPCSLA62SB02

Patch Panels

	16 Port	24 Port	32 Port	48 Port
Unshielded Panel Universal IDC - Black	GPCPNLU16002	GPCPNLU24002	GPCPNLU32002	GPCPNLU48002
Unshielded Panel Universal IDC - Grey	GPCPNLU16008	GPCPNLU24008	GPCPNLU32008	GPCPNLU48008
Unshielded Panel LSA Style - Black	GPCPNLU160K2M	GPCPNLU240K2M	-	-
Unshielded Panel LSA Style - Grey	GPCPNLU160K8M	GPCPNLU240K8M	-	-
Unshielded Panel 110 Style - Black	GPCPNLU16012M	GPCPNLU24012M	-	-
Unshielded Panel 110 Style - Grey	GPCPNLU16018M	GPCPNLU24018M	-	-
Shielded Panel LSA Style - Black	GPCPNLF160K2M	GPCPNLF240K2M	-	-
Shielded Panel LSA Style - Grey Shielded Panel	GPCPNLF160K8M	GPCPNLF240K8M	-	-
110 Style - Black	GPCPNLF16012M	GPCPNLF24012M	-	-
Shielded Panel 110 Style - Grey	GPCPNLF16018M	GPCPNLF24018M	-	-
Angled Snap-in-Jack Panel - Black	-	MMCPNLX24S1J2MAN	-	-
Coloured Insert Snap-in-Jack Panel - Black	-	MMCPNLX24S1J2CII	-	-
Coloured Insert Snap-in-Jack Panel - Grey	-	MMCPNLX24S1J8CII	-	-

For more information please visit www.brand-rex.com or email: marketing@brand-rex.com



brand-rex head office
viewfield industrial estate
glenrothes, fife
KY6 2RS
united kingdom

tel: +44 (0) 1592 772124
fax: +44 (0) 1592 775314

brand-rex argentina
c/ingeniero butty 240, piso 4º
(C1001AFB) buenos aires
argentina

tel: +54 11 4590-2242 / 4
fax: +54 11 4590-2201

brand-rex asia pacific
17/F prosperity centre
77-81 container port road
kwai chung
hong kong

tel: +852 3620 2602
fax: +852 3621 0018

brand-rex china
room B105-A23, FESCO building
No. 14 chaoyangmen nandajie
changyang district
beijing
pr china

tel: +852 3620 2602
fax: +852 3621 0018

**brand-rex central &
eastern europe**
millennium tower
handelskai 94-96
1200 wien
austria

tel: +431 24027 512
fax: +431 24027 66510

brand-rex france
120, rue jean jaurès
92 300 levallois perret
france

tel: +33 (0) 1 70 98 78 25
fax: +33 (0) 1 70 98 78 36

brand-rex germany
bunsenstrasse 5
D-51647 gummersbach
germany

tel: +49 (0) 2261 814243
fax: +49 (0) 2261 814909

brand-rex IMEA
PO box 123908
M-3 mezzanine floor
sheikha sana building
sheikh zayed road
al wasl, dubai
united arab emirates

tel: +971 4 321 7525
fax: +971 4 321 7535

brand-rex italy
via giovanni da udine, 34
20156 milano
italy

tel: +39 02 3809 3711
fax: +39 02 30412014

brand-rex london
72 cannon street
london
EC4N 6AE
united kingdom

tel: +44 (0) 207 489 7637
fax: +44 (0) 207 113 2239

brand-rex nordic
mänskensvägen 14A
44340 gråbo
sweden

tel: +46 (0) 704 621950

brand-rex portugal
lagoas park edificio 8 – piso 0
2740-244 porto salvo
portugal

tel: +351 21 421 4133
fax: +351 21 421 4135

brand-rex spain
avenida de la vega, 1
edificio 3. planta 2. oficina 11
28108 alcobendas
madrid, spain

tel: +34 914 905 919
fax: +34 916 573 331

www.brand-rex.com
marketing@brand-rex.com

The information contained in this document is valid and correct at the time of issue.
However, we reserve the right to modify details without notice in the light of subsequent
Standard / Specification changes and ongoing technical developments.
© Brand-Rex Limited 2008

Literature Ref: GIGAPLUS/UK/2 0908

